

TABLE OF CONTENTS

1	INDEX
2	BRIEF INTRODUCTION
4	CHAIRMAN'S MESSAGE
5	COMPANY'S DIVISIONS
6	OUR COMPANIES
12	ORGANIZATIONAL CHARTS
13	MASTER LIST
14	OUR CLIENTS
15	PROJECTS
19	ACCOMPLISHED PROJECTS
45	ONGOING PROJECTS
108	LIST OF COMPANY OWNED VEHICLES
120	SHAHANIYA STORE
122	SHAHANIYA ALUMINUM FACTORY
128	AL EZZ CHINA & AL EZ SPAIN
138	COMPANY CERTIFICATIONS



AL BADER
GROUP CO. W.L.L.



Shaping & Moulding Concepts Into Practical
& Cost Effective Proposals For Project Developments
& Multifarious Business Activities.

It seems only a short while since 1991 when we made our first small steps into the growing Place of Qatar. In fact, we were indeed, very much newcomers.

Many of the prestigious companies were already represented, and feeling the benefits of the so called "industrial revolution" in the Gulf. Through the untiring efforts and dedication of both the management and workforce, we have nevertheless been able to achieve rapid progress by the introduction of new projects.

Today, we are one of Qatar's leading business organizations with many of the companies within our group, project leaders in their own particular field.

This Qatar market is the playing field on which, today we operate and passionately compete. Our success has been due to our philosophy of continually looking forward, to analyze and anticipate opportunities available as future economic and industrial scenario unfolds.

Our strength lies in our ability to create fresh and often innovative ideas and by using the enormous resource we have to shape and mould these concepts, into practical and cost effective proposals for the project development & multifarious business activities. These are then finally synchronized in a truly professional manner to achieve above all a single goal. To provide outstanding service to the Qatar market whether be it a government department, one of our international representative companies or an individual customer.

This profile has been produced to provide a brief status record of The Group capability after nearly (15) fifteen years of business operations. It is not possible to depict all aspects and dynamism that are combined in the physiology of our activities. Nevertheless, we hope this profile portrays in pictures and words, an overview of The Group operations.

We are proud of our involvement in the development and co-operation with many international enterprises; we are always open for business and to new ideas, because an open mind is one that can take full advantage of opportunities.



AL BADER GROUP CO. W.L.L.

NAME OF COMPANY	Al Bader Group Co. W.L.L.
DATE OF ESTABLISHMENT	1991
COMMERCIAL REGISTRATION	27745
MAIN LOCATION	Al Gharaffa, Doha - Qatar
PAID-UP CAPITAL	QAR 6,000,000.00
BANKS	Doha Bank, Standard Chartered Bank, International Islamic Bank, Al-Ahli Bank, Mashreq Bank, Al- Khaliji Bank, HSBC Bank, Qatar National Bank, Commercial Bank, Barwa Bank, Barclays PLC
PARTNERS	Mohammad Khalaf Sultana Al Bader (Sponsor), Moetaz Mohamed Hussein Moharam (General Manager), Sheikh Faisal bin Jassim Thani AL THANI
ADDRESS	P.O. Box 18246 - Doha, Qatar
CONTACT INFORMATION	Tel: +974 4486 3719 Fax: +974 4412 1791
EMAIL	albader_engineer@yahoo.com albadereng@qatar.net.qa info@albadergroup.net

VISION

Continuous strive to analyze available opportunities in the economic and industrial fields to be one of the leading companies in this field, and keeps continuous success in the fields of operation for the group services and adheres to quality standards of products and maintain the advantages of trademarks to bring credibility to customers. In addition, we work on transfer the brilliant successes made on local sphere into an international arena to be in forefront of internationally successful corporate in promising fields.

MISSION


Our power stems from our capacity to establish new and innovated ideas using the immense resources to create effective scientific suggestions in terms of cost effectiveness to develop diverse businesses and projects. Expansion as investment company through utilization of expertise that extend over 23 years to complete the critical projects that can attract social and economic benefits and apply investment policies based on the principle of leadership, aspiration and excellence to provide service that has quality concept that derives from application of modern technology, expert human resources, scientific accumulation, efficiency and profit by providing good services and achieving quality on long run and contributing to development of scientific, environmental and economic areas and secure sustainability as a reliable company in all respects.

STRATEGY



The basic strategy of Al Bader Group is summarized in its unique position in the fields of construction, contracting and maintenance of the level that we reached with permanent growth and sustainable development. As for the development of the group and development strategy and expansion, it is a key concept of the company based on the principle of transfer of scientific experiences that derive from the projects completed by over years, to all fields of critical and promising work in Qatar and on an international level as investment company.





One of the strongest features of our company is commitment and diligence. We are diligent and careful to our customers and our staff members. So, we managed to survive and promote Qatari market, in spite of the recessions that some Arab countries experienced. Al Bader guarantees completion and hand over of projects in time without delay for all project completion milestones. The company had prominent and reliable position, not only within the framework of projects completed in Qatar, but also abroad, through adoption of the principles and bases of our work in the projects completed. One of the main factors that synergized for the success of our company on the international arena is the principle of full compliance and reliance on the approach of credibility to the representatives including project owners, especially after takeover and understanding the principle of transparency for retaining of business relationships and handover of project after completion at high quality regardless of the difficulties, which provides distinctive impression of the project completed by our companies. All these concepts are applicable at the highest level of quality regardless of price and implementation of all material and moral undertakings not only towards the project owners but also towards all local institutions and authorities with which we deal, and establishment of good relations based on credibility confidence and respect of socio-economic structure of the countries contributed to our success. Al Bader plays a prominent role in the field of infrastructure that currently undergoes rapid development in Qatar. We continuously expand and update our information and follow up economic development to produce the best results and increasing needs of Qatar and throughout the world while assuming responsibility of carrying out such works. Our basic objective is research and development in academic fields. This means continuous innovation and adaptation to recent developments. The group continues its pursuit to achieve its objective in reaching the top listed and first ranked corporate amongst international construction companies. It promotes features in terms of confidence and respect, and overcomes difficulties and competence in the field of work. In spite of immense developments and emergency changes over time, we knew that there are one thing that doesn't change by time, gaining customer satisfaction and successfully completing work requirements of each project.



Eng. Moetaz Moharam
Chairman of the Board of Directors

COMPANY DIVISIONS

1. CONTRACTING

- # Compound Villas
- # Buildings
- # Roads & Bridges
- # High Rise Buildings

2. INDUSTRIAL

- # Refrigeration:
 - # Cold Stores
 - # Ice Making System
 - # Supermarket Refrigerated Showcases
- # Wooden and steel doors (Fire rate & Standard)
 - # Wooden and steel doors FR 90 min.
 - # Wooden and steel doors FR 120 min.
 - # Wooden and steel doors FR 180 min.
- # Air Conditionar
 - # Window A/C
 - # Split A/C
 - # Chirller A/C
 - # Standing A/C

3. HVAC

- # Laundry Systems:
 - # Dry Clean Machines
 - # Heavy Duty Washer Extractors and Dryers
 - # Flat work Irons Systems
 - # Tractors & Dryers
 - # Marking Systems, Sorting Machines

4. STEEL

- # Supply and installation of air-condition, central package & central duct split

5. FABRICATION FACILITIES

- # Design, fabrication & installation of iron works/sheet metal

6. TRADING

- # GI Ducting
- # Wrought & Iron
- # Sheet Metal
- # Carpentry



Al Bader is one of the largest general contracting companies in the field of buildings (construction, repair, demolition and restoration). Activities of the company include road works, water and sewerage works, electricity, mechanical and electronic works, telecommunication technology, industrial works, dam works, well drilling, marine works, landscaping, site organization, maintenance of residential and commercial buildings, maintenance and operation of water and sewerage works, maintenance and of electrical, mechanical and electronic works, maintenance and operation of communication technology, maintenance and operation of industrial works, cleaning of cities and disposal of wastes, dumps and burial of wastes, maintenance of gardens and parks, purchase of lands for establishment of buildings on them, investment in buildings by cash or installment sale, lease for favor of company, management, maintenance and development of properties, purchase and possession of properties for the favor of the company, sale, purchase and realization of properties and lands for the favor of the company, import, export and trading services.

⚙ BALA'BAK

Specialized in all ironmongery works and distinguished with accurate execution and professional fer forge works. We enjoy elegance of kitchen design and are specialized in aluminum works and exteriors works with above thirty years of experience.

⚙ NICE AIR

The company has been established for 15 years. Since its establishment, the factory now has 626 employees- engineers, technicians and laborers- all working together to produce air conditioners ranging from standing to split or duct to window to chiller. The company has a mass production 500,000 (250K split, 130K windows, 70K duct and 50K chiller) units per year and has a target to reach its mass production to 1,000,000 units per year by 2018.

⚙ AL BADER ENGINEERING

Leading company in the field of building, construction and hotel furnishing, distinguished as leading company in major projects and urban communities at the highest quality standards and timely delivery. The company is managed by group of experienced engineers who gained experience through high academic education, and abundant deal of skills and deep understanding of engineering concepts. The company is committed to design and construction of different types of projects with over 23 years of experience. However, the company didn't stop at this limit; it acquired several agencies, including Nice Air that spread in over 36 countries around the globe, and is one of the most wide-spread agencies.

- ⚙ Ready industrial projects

OUR COMPANIES

AL BADER FOR S & E & I Al Bader Import and Export Services

- # Exhaust delivery systems in the electric stations
- # Office and residential buildings
- # All types of metal structures
- # All types of electric systems
- # High quality mechanical systems
- # Developed repairs and renovations
- # Renovation of concrete and steel structures

One of the leading business sector companies in the field of foreign trade. The company is engaged in general trade, and operates in import and export activities. The company's activities are not limited to foreign trade, and it extended to domestic trade and undertaking of all commercial, financial and preparatory works related to these activities, in addition to brokerage in securing commercial transactions with several countries, and commercial sharing and performance of commercial operations of import and export from and to different world countries by utilizing its foreign and domestic subsidiaries and stores and alleviating the catering bottlenecks that markets encounters.

AL EZZ for Business Clearance & Trading

The company works in the field of possession, sale and purchase of stocks and instruments of the real estate companies, preparation of studies and provision of consults in the real estate fields, in addition to possession, management, operation, leasing and investing in hotels, guest houses, gardens, exhibitions, restaurants, cafeterias, tourist resorts, health clubs, entertainment and sports projects and stores. The company's activities also include organization of exhibitions and real estate auctions of company's projects in addition to possession and management of markets and residential communities.

AL EZZ CHINA

One of the leading companies in export & import that coordinates trading between countries for 15 years, this company exports international brands A/C, granite, ceramic, marbles and other products from China to other countries.

AL EZ SPAIN

The company was established in 2009. Specializing in producing Kitchen Furniture, Bathroom Furniture, Satinary Products, Cabinets, Stoneware Tiles, Parquet, Doors.



Bala'bak
Metal Work



Bala'bak
Metal Work



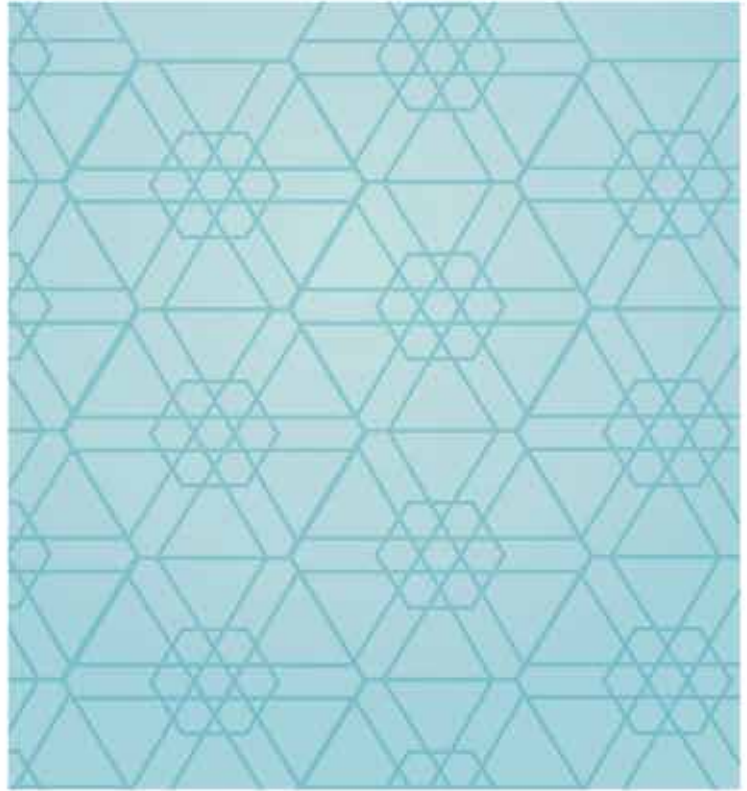
OUR COMPANIES



Bala'bak
Metal Work



Bala'bak
Metal Works

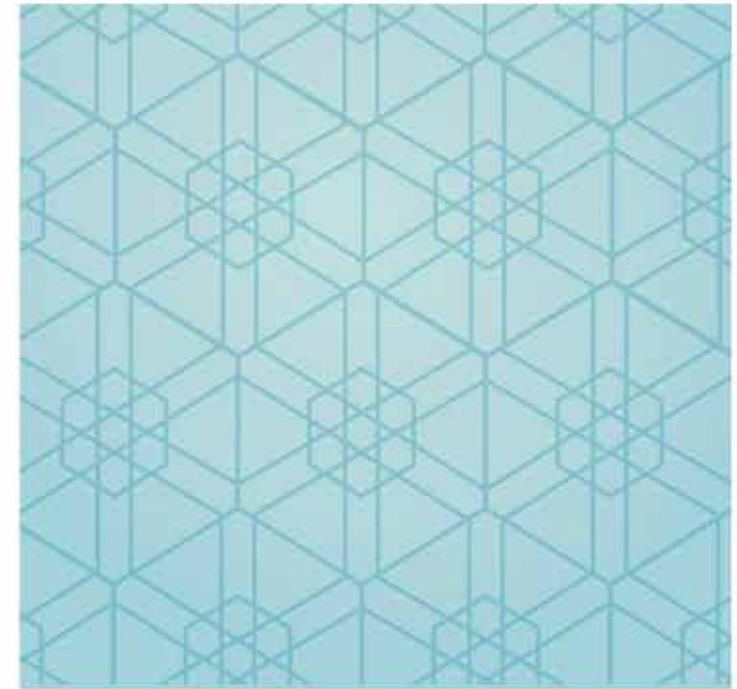


Bala'bak
Metal Work



Bala'bak
Metal Work

Al Ezz Commercial Market



Al Ezz Commercial Market



ORGANIZATIONAL CHART

Al Bader Group Organization Chart

Balbeck Ironsmith / Al Bader For Marble & Granite / Al Bader Engineering / Al Ezz for Business Clearance Trading / Al Bader Aluminum / Nice Air / Al Bader for Services Export & Import/Al Bader for Gas & Petrol



MASTER LIST



Serial No.	DESCRIPTION	NUMBERS
1	Board of Director	1
2	General Manager	1
3	Executive Director	1
4	Manager (for each subsidiary)	15
5	Manager (for each sector)	12
6	Secretaries	6
7	Press Relations Officer (mandoob)	11
	Accountants	21
9	Store-keepers	20
10	Engineers:	
11	Projects Manager	1
11.A	Project Engineer	12
11.B	Civil Engineer	21
11.C	Electrical Engineer	15
11.D	Mechanical Engineer	14
11.E	Technical Engineer	17
11.F	Site Engineer	21
11.G	Architects	12
11.H	Surveyors	9
11.I	Foreman	55
12	Translators	5
13	Technicians (Filipinos 300 / Egyptians 1025 / Chinese 1800)	3125
14	Helpers (Nepal)	1817

OUR CLIENTS



Alfardan



Sheikh Jassim Thani bin Jassim AL-THANI
Sheikh Hamad bin Abdullah bin Thani AL-THANI
Sheikh Nasser bin Jassim Thani AL-THANI
Sheikh Faisal bin Jassim Thani AL-THANI
Sheikh Ghanem bin Jassim Thani AL-THANI
Sheikh Mohammed Bin Saoud
Sheikh Nayef Bin Suhaim
Khalid Abdel-Aziz Khalid El-Ghanem Al-Maadeed
AL Fardous Electro-Mechanical
HALA GROUP ENTERPRISES
Medical Care Group
Ministry Of Education
Hamad Medical Corporation
Ministry Of Municipal Affairs
Qatar Armed Forces
Qatar Food Company (Americana)
Al-Huda Trading and Contracting
Arabesque (Al-Darwish Trading and Contracting)
ABN Real Estate
Zukhrof Real Estate
K. Span Qatar
Cleopatra Contracting
Commodore
Al-Fardan Real Estate
Standard Chartered Bank
Qatar National Bank
Doha Bank
Commercial Bank
Al Khaliji Bank
Barwa Bank
Barclays PLC



AL BADER
GROUP CO. W.L.L.



PROJECTS

ACCOMPLISHED & ONGOING



Serial No.	PROJECT	DESCRIPTION
1	Deportation Prison Ministry of Interior	Construction of all works from start to turn key.
2	Al Jazeera Channel	Supply of cooling units, window AC's, chiller units
3	Al- Hagen Racing Club	
4	Hardees (Doha, Airport & Rayyan)	Design, Supply & installation of cooling units
5	KFC	Design, Supply & installation of cooling units
6	Hamad Medical Corporation	Supply of cooling units
7	Lebanese Food Stuff Co.	Supply of kitchen facilities (bompani), cold stores/cooling units/refrigeration
8	American Air Base	Supply of cooling units
9	European Clinic	Supply of cooling units
10	Al-Salam Villa	Construction
11	Qatar Auctions	
12	QASCO	
13	Al Jaber Trading	Supply of air-condition
14	Qatar Customs	
15	Qatar Building Co.	

EARLIER ACCOMPLISHED PROJECTS



16	<i>Bin Nasser Real Estate</i>	
17	<i>Hayden</i>	
18	<i>28 Villa Compound</i>	<i>Owner: Sheikh Nawaf bin Sahem Thani Al-Thani</i>
19	<i>Offices & 16 Villas Project</i>	<i>Under Hamad Hospital</i>
20	<i>16 Shops</i>	<i>Location: Landmark</i>
21	<i>Bird Hospital</i>	<i>Location: Shahaniya</i>
22	<i>Qatar Gas Building Offices</i>	<i>Location: Um Said</i>
23	<i>Search Office Building</i>	
24	<i>22 Villas + Sports Club</i>	<i>Location: Zhagawa</i>
25	<i>Al- Hagen Racing Club</i>	<i>Owner: Sheikh Hamad Bin Abdullah Bin Jassim Al Thani</i>
26	<i>Hardees (Doha, Airport & Rayyan)</i>	<i>Owner: Sheikh Nasser Bin Jassim Al Thani</i>
27	<i>KFC</i>	<i>Owner: Sheikh Hamad Bin Abdullah Bin Jassim Al Thani, Location: Al Gharafa</i>

PROJECT #	PROJECT NAME	PROJECT LOCATION	PROJECT OWNER	PROJECT STATUS
1	230- Villa Compound Project	Al Gharafa	Sheikh Hamad Bin Abdullah Jassim Al Thani	Accomplished
2	40- Shops & 46- Flats	Al Gharafa	Sheikh Hamad Bin Abdullah Jassim Al Thani	Accomplished
3	20- Villa Compound Project	Al Gharafa	Sheikh Hamad Bin Abdullah Jassim Al Thani	Accomplished
4	85- Villa Compound Project	Al Gharafa	Sheikh Nasser Bin Jassim Al Thani	Accomplished
5	90- Villa Compound Project	Madinat Khalifa North	Sheikh Jassim Thani bin Jassim Al Thani	Accomplished
6	22- Villa Compound Project	Zhagawa	Sheikh Ghanem bin Jassim Al Thani	Accomplished
7	15- Villa Compound Project	Zhagawa	Sheikh Faisal Bin Jassim Al Thani	Accomplished

*see pages 19 - 44

PROJECT #	PROJECT NAME	PROJECT LOCATION	PROJECT OWNER	PROJECT STATUS
1	Al Seeliya Tower	Al Dafna	Sheikh Khalid Abdul Aziz KG Al- Maadeed	Ongoing
2	Residential Offices & Commercial Building	Fareej Abdel Aziz	Sheikh Jassim Thani bin Jassim Al Thani	Ongoing
3	Salwa Resort	Salwa Road	HALA Group	Ongoing
4	Musheirib Residential Building	Musheirib	Sheikh Jassim Thani bin Jassim Al Thani	Ongoing
5	15- Villa Compound Project	Zhagawa	Sheikh Faisal Bin Jassim Al Thani	Ongoing
6	44- Villa Compound Project	Zhagawa	Sheikh Khalid bin Jassim Al Thani Sheikh Fahad bin Jassim Al Thani Sheikh Jabar bin Jassim Al Thani Sheikha S bin Jassim Al Thani	Ongoing
7	62- Villa Compound Project	Zhagawa	Sheikh Jassim Thani bin Jassim Al Thani	Ongoing

*see pages 45-107





AL BADER
GROUP CO. W.L.L.

ACCOMPLISHED PROJECTS



PROJECT TITLE	40 SHOPS & 46 FLATS
OWNER	Sheikh Hamad bin Abdullah bin Jassim Al Thani
CONSULTANT	Al-Alameia Engineering
CONTRACT PERIOD	14 months
CONTRACT COST	QAR 21,000,000.00
LOCATION	Al Gharafa
STATUS	DONE

PROJECT 1 230 VILLA COMPOUND



Entrance
at 69 villa compound

ACCOMPLISHED PROJECTS



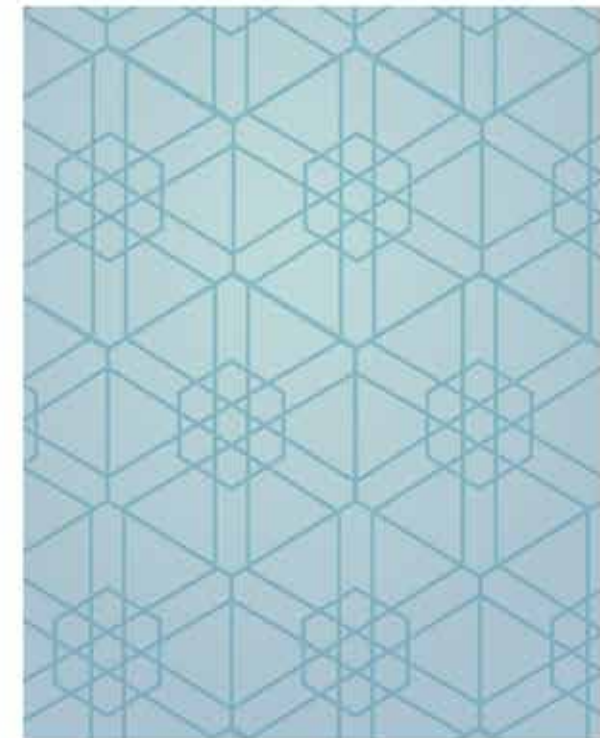
Villa Facade of
69 villa compound



Main Door
69 Villa Compound



Swimming pool of
69 villa compound



1st Row of Villas upon entrance
69 Villa Compound



2nd Row of Villas upon entrance
69 Villa Compound



ACCOMPLISHED PROJECTS



3rd Row of Villas at the back of gym/swimming pool
69 Villa Compound



2 Villa Facade
69 Villa Compound



1st Row of Villas
161 Villa Compound



2nd Row of Villas
161 Villa Compound



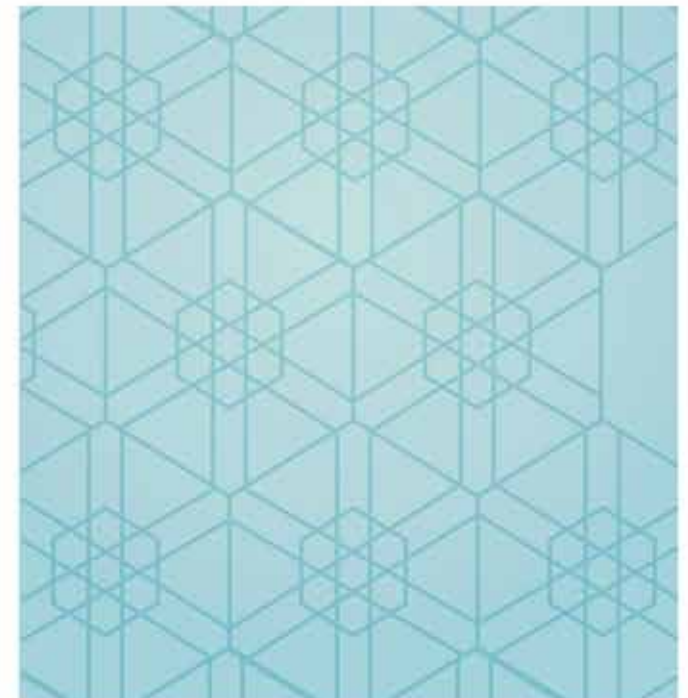
ACCOMPLISHED PROJECTS



Swimming pool in construction
161 Villa Compound



Swimming pool
161 Villa Compound



Typical Kitchen Setup for the
230 Villa Compound



Typical Kitchen Setup for the
230 Villa Compound



ACCOMPLISHED PROJECTS



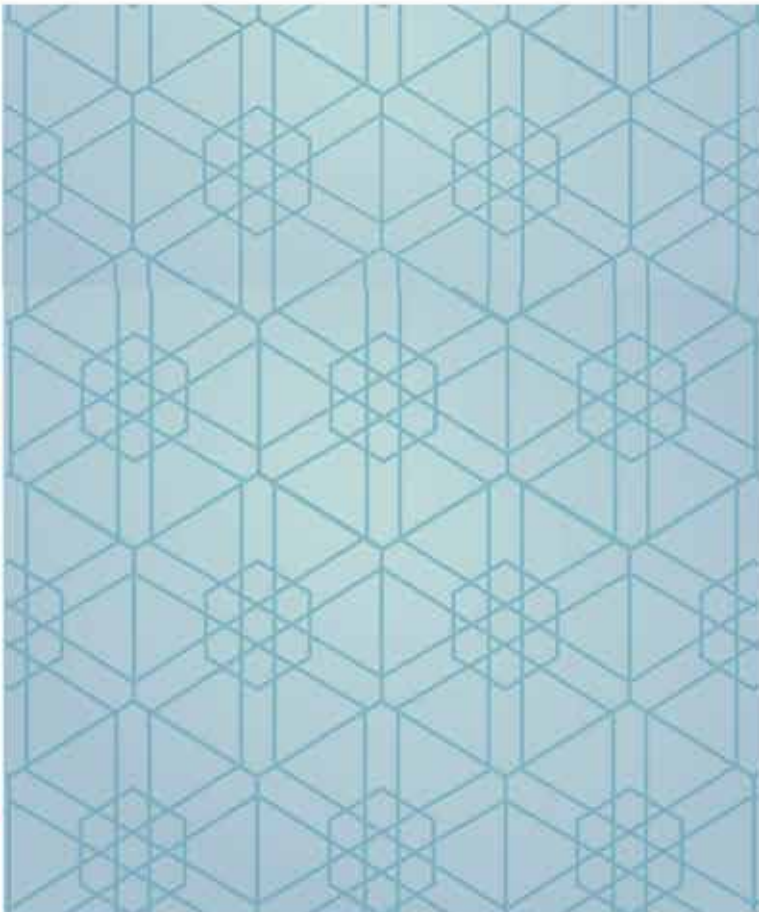
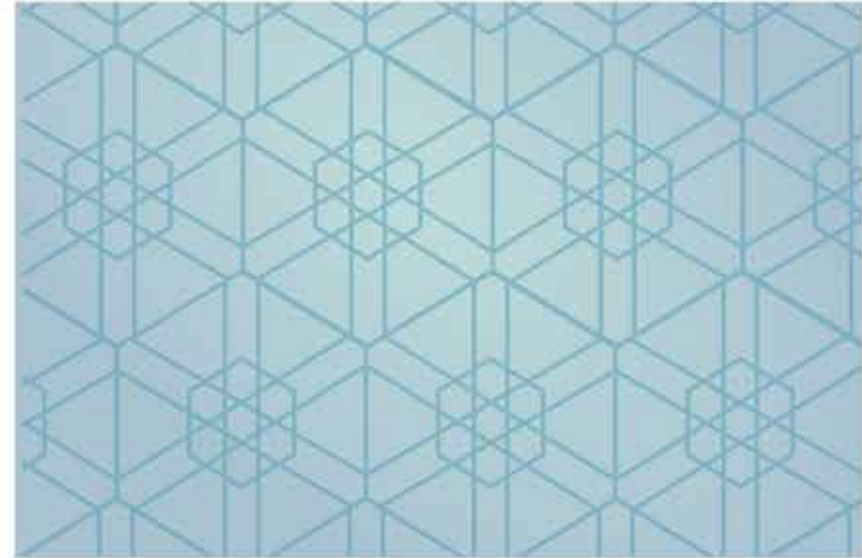
Typical Washroom for the 230 Villa Compound



Typical Washroom for the 230 Villa Compound

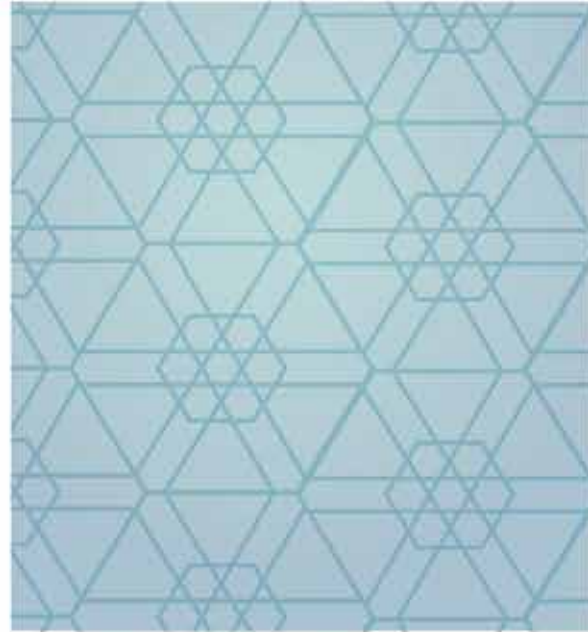


Gym Under Construction
161 Villa Compound



Gym for the
161 Villa Compound

ACCOMPLISHED PROJECTS



Gym Cafeteria
69 Villa Compound



Gym Cafeteria
69 Villa Compound



Gym machines & equipments
230 Villa Compound



Gym machines & equipments
230 Villa Compound





Gym Reception
230 Villa Compound



PROJECT TITLE	40 SHOPS & 46 FLATS
OWNER	Sheikh Hamad bin Abdullah bin Jassim Al Thani
CONSULTANT	Al-Alameia Engineering
CONTRACT PERIOD	14 months
CONTRACT COST	QAR 21,000,000.00
LOCATION	Al Gharafa
STATUS	DONE

PROJECT 2 40 STORE & 46 FLATS



40 Stores & 46 Flats

ACCOMPLISHED PROJECTS

PROJECT TITLE	20 VILLA COMPOUND
OWNER	Sheikh Hamad bin Abdullah bin Jassim Al Thani
CONSULTANT	Al-Alameia Engineering
CONTRACT PERIOD	16 months
CONTRACT COST	QAR 16,000,000.00
LOCATION	Al Gharafa
STATUS	DONE



Compound Entrance
20 Villa Compound



Villa Facade
20 Villa Compound

PROJECT 3 20 VILLA COMPOUND



Inside the Compound
20 Villa Compound

ACCOMPLISHED PROJECTS



Swimming Pool
20 Villa Compound



PROJECT TITLE	85 VILLA COMPOUND
OWNER	Sheikh Nasser bin Jassim Al Thani
CONSULTANT	Al-Alameia Engineering
CONTRACT PERIOD	24 months
CONTRACT COST	QAR 70,970,000.00
LOCATION	Al Gharafa
STATUS	DONE

PROJECT 4 85 VILLA COMPOUND



85 VILLA COMPOUND

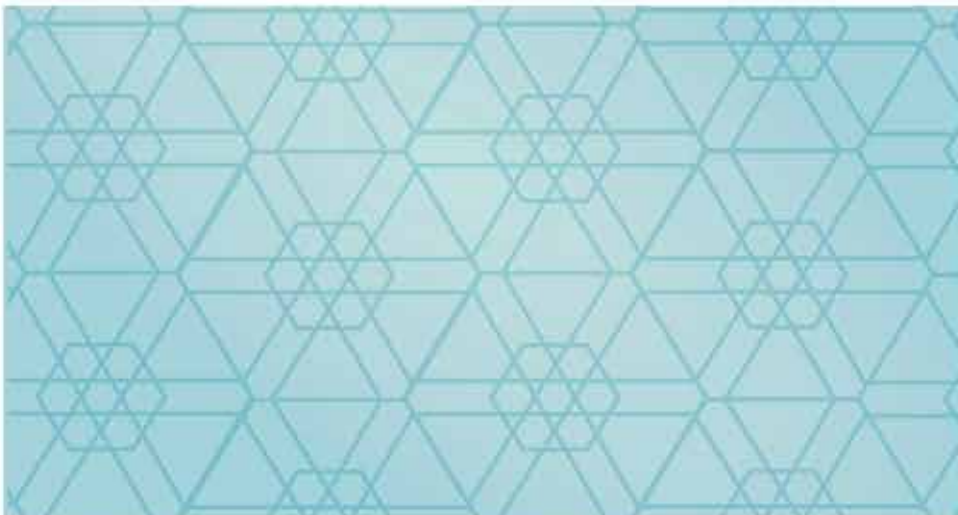
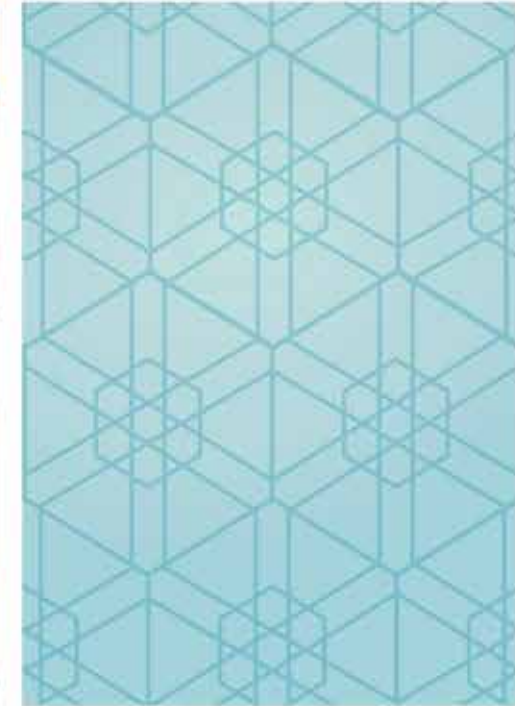
ACCOMPLISHED PROJECTS

PROJECT TITLE	90 VILLA COMPOUND
OWNER	Sheikh JassimThani bin Jassim Al Thani
CONSULTANT	Al-Alameia Engineering
CONTRACT PERIOD	24 months
CONTRACT COST	QAR 104,685,805.00
LOCATION	Madinath Khalifa North
STATUS	DONE



PROJECT 5 90 VILLA COMPOUND

Villa Facade
90 Villa Compound



Gym Facilities & Equipments
90 Villa Compound



ACCOMPLISHED PROJECTS

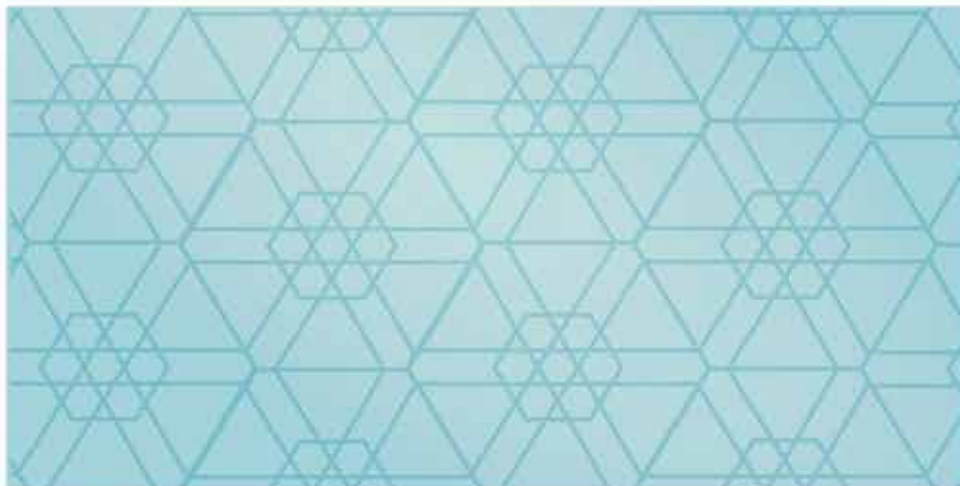
PROJECT TITLE	22 VILLA COMPOUND
OWNER	Sheikh Ghanem bin Jassim Al Thani
CONSULTANT	Al-Alameia Engineering
CONTRACT PERIOD	18 months
LOCATION	Zhagawa
STATUS	DONE



Villa Entrance
22 Villa Compound

PROJECT 6 22 VILLA COMPOUND

Villa Facade
22 Villa Compound



Compound Swimming Pool
22 Villa Compound



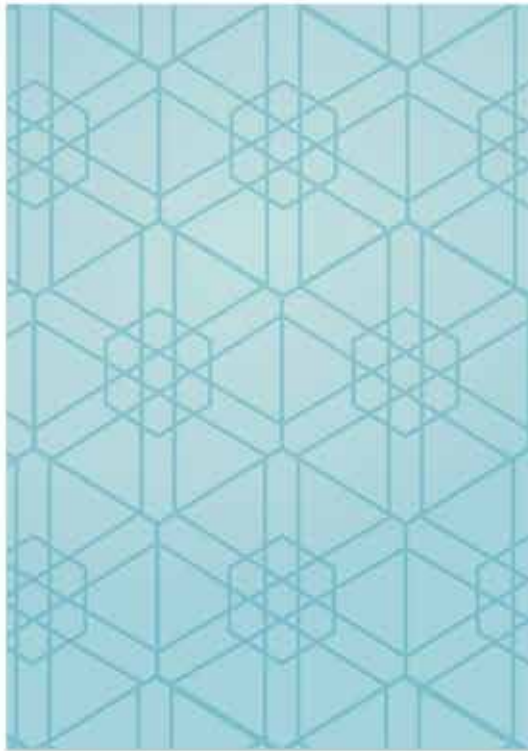
PROJECT 7

15 Villa Compound



PROJECT TITLE	15 Villa Compound
OWNER	Sheikh Faisal Jassim Thani Jassim Al Thani
CONSULTANT	Al-Alameia Engineering
CONTRACT PERIOD	24 months
LOCATION	Zhagawa
STATUS	DONE
SUMMARY	15 Villas + Sports Club; Total area for each villa: 286 m ² Total area for Sports Club : 193 m ² Total area for compound: 4637 m ²

15 Villa Compound



15 Villa Compound



ACCOMPLISHED PROJECTS



15 Villa Compound



15 Villa Compound





AL BADER
GROUP CO. W.L.L.

ONGOING
PROJECTS

PROJECT : HOTEL APARTMENT TOWER
B2+G+33FLOOR.



PERSPECTIVE

OWNER KHALID ABDULAZIZ K G AL-MAADEED
LOCATION AL DAFNA



ARABIAN ARCHITECT GROUP
P.O. BOX 100, Doha, Qatar

PROJECT TITLE	AI SEELIYA TOWER
OWNER	Sheikh Khalid Abdul Aziz KG Al-Maadeed
CONSULTANT	Arabian Architect Group
CONTRACT PERIOD	24 months
CONTRACT COST	QAR215,000,000.00
LOCATION	Al Dafna
STATUS	ONGOING

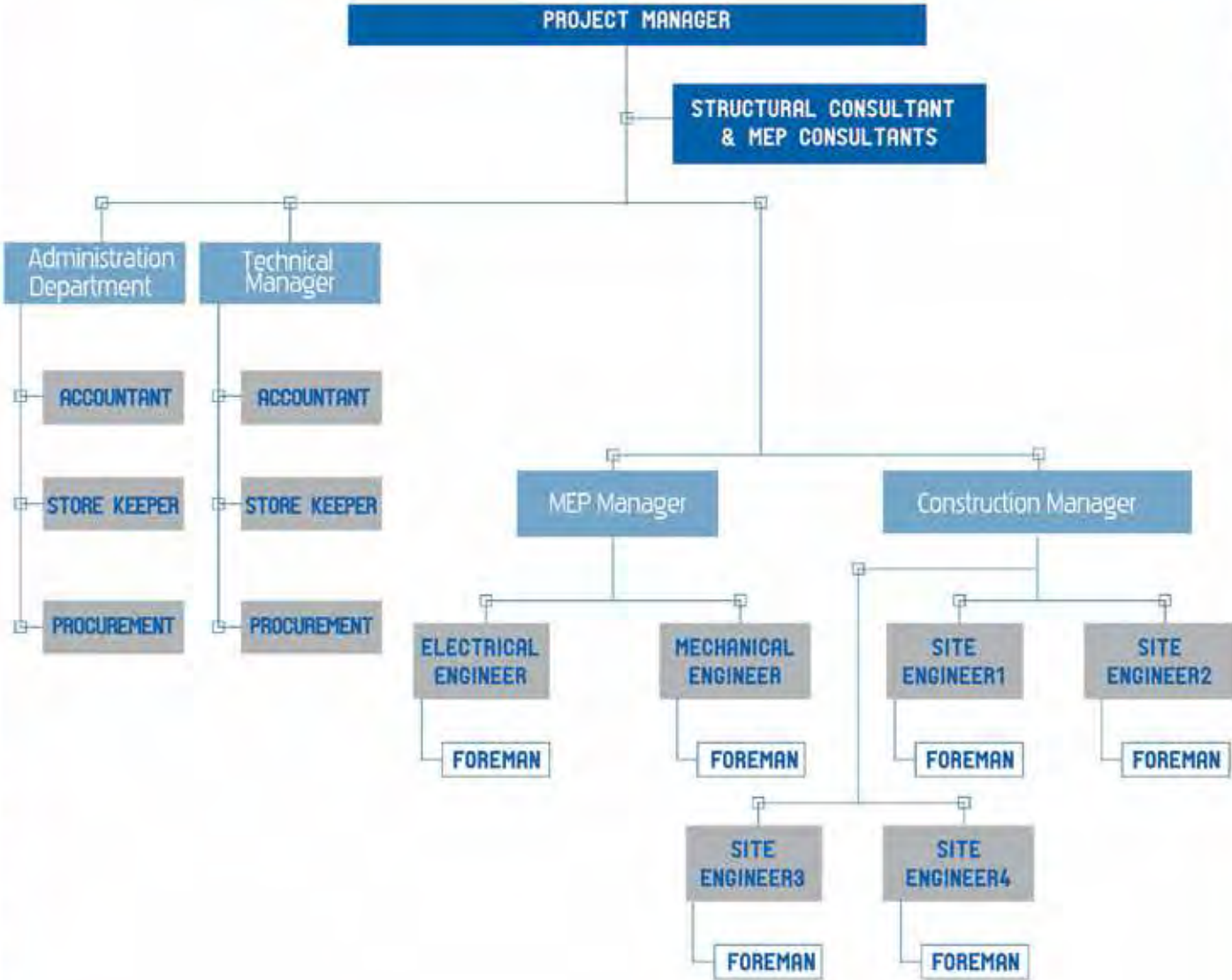
PROJECT 1

AI SEELIYA TOWER

HOTEL - APARTMENT



AL SEELIYA TOWER ORGANIZATIONAL CHART



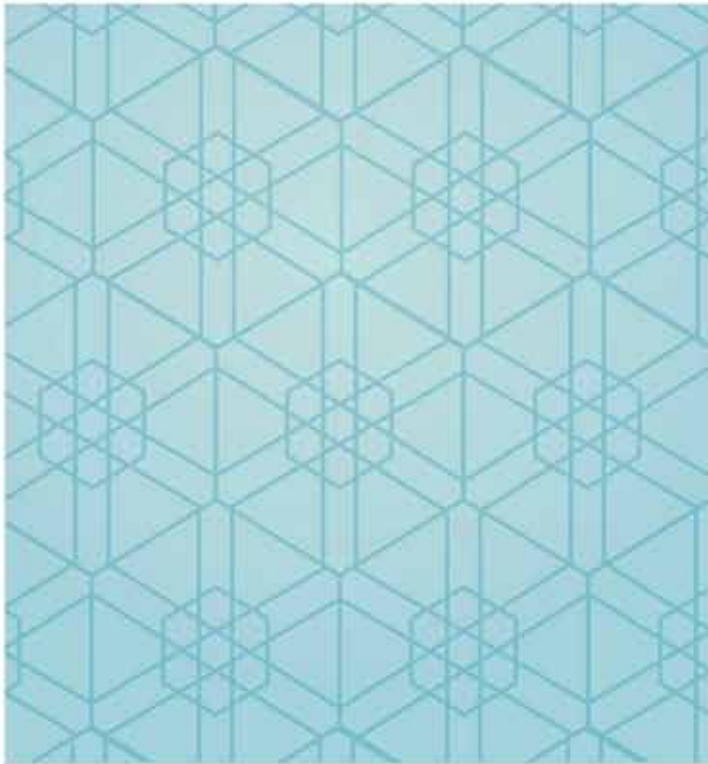
First Slab under construction
Al Seeliya Tower



Under Construction
Al Seeliya Tower



Under Construction
Al Seeliya Tower



Under Construction
Al Seeliya Tower



First Slab
Al Seeliya Tower



First Slab
Al Seeliya Tower





Al Seeliya Tower
Hotel- Apartment Tower

Industrial Lift
Al Seeliya Tower



Al Seeliya Tower
Hotel- Apartment Tower



Al Seeliya Tower
Hotel- Apartment Tower



ONGOING PROJECTS



Al Seeliya Tower
Hotel- Apartment Tower



Al Seeliya Tower
Hotel- Apartment Tower





Al Seeliya Tower
Hotel Apartment Tower

ONGOING PROJECTS

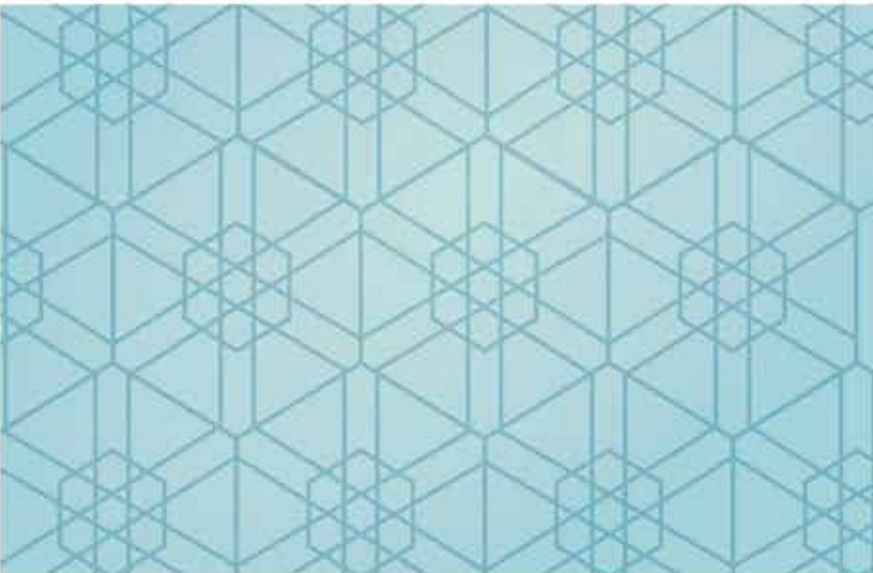
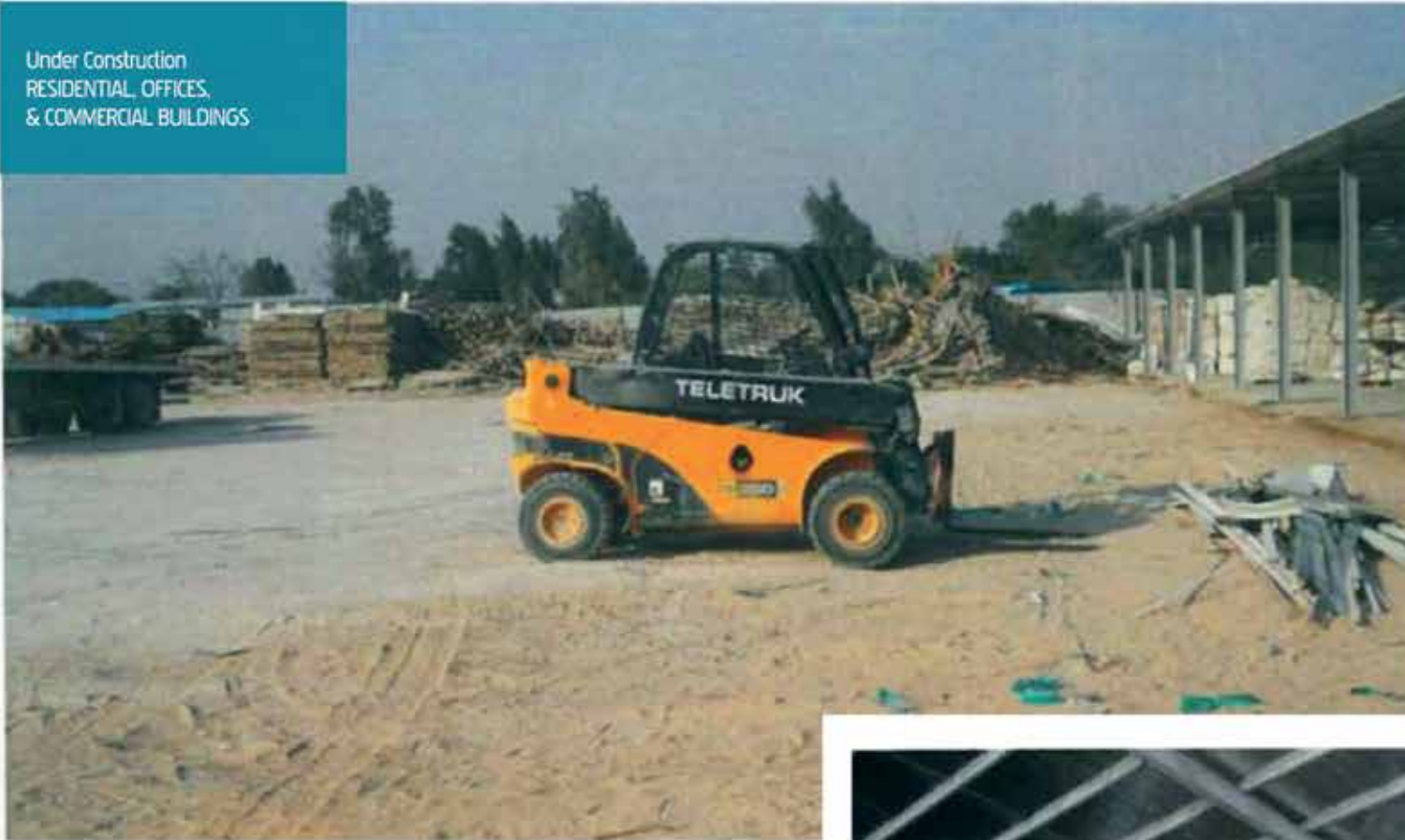
PROJECT TITLE	RESIDENTIAL, OFFICES & COMMERCIAL BUILDING
OWNER	Sheikh Jassim Thani bin Jassim Al Thani
CONSULTANT	Al Jazeera Engineering Consultants
CONTRACT PERIOD	30 months
CONTRACT COST	QAR 118,000,000.00
LOCATION	Fareej Abdel Aziz
STATUS	DONE



PROJECT 2 RESIDENTIAL, OFFICES & COMMERCIAL BUILDING



Under Construction
RESIDENTIAL, OFFICES,
& COMMERCIAL BUILDINGS



Under Construction
RESIDENTIAL, OFFICES,
& COMMERCIAL BUILDINGS

ONGOING PROJECTS





ONGOING PROJECTS



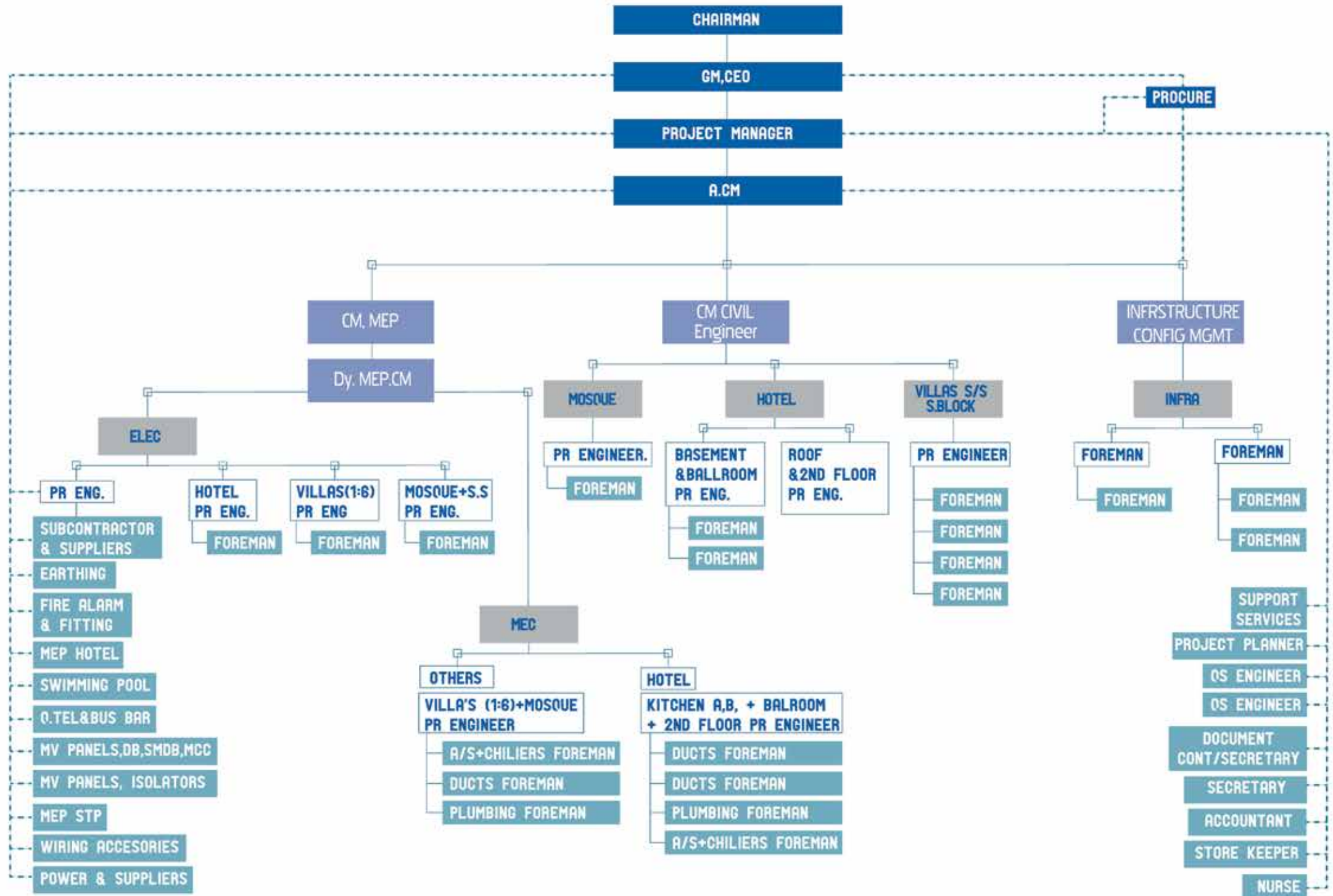
PROJECT TITLE	SALWA RESORT
OWNER	HALA GROUP
CONSULTANT	KEO Engineering Consultant
CONTRACT PERIOD	24 months
LOCATION	Salwa Road
STATUS	ONGOING



Salwa Restort & Hotel

PROJECT 3
SALWA RESORT

SALWA RESORT ORGANIZATIONAL CHART



ONGOING PROJECTS



External Painting Works,
In Front of Hotel



Parking Area
In Front Of The Hotel
Salwa Resort



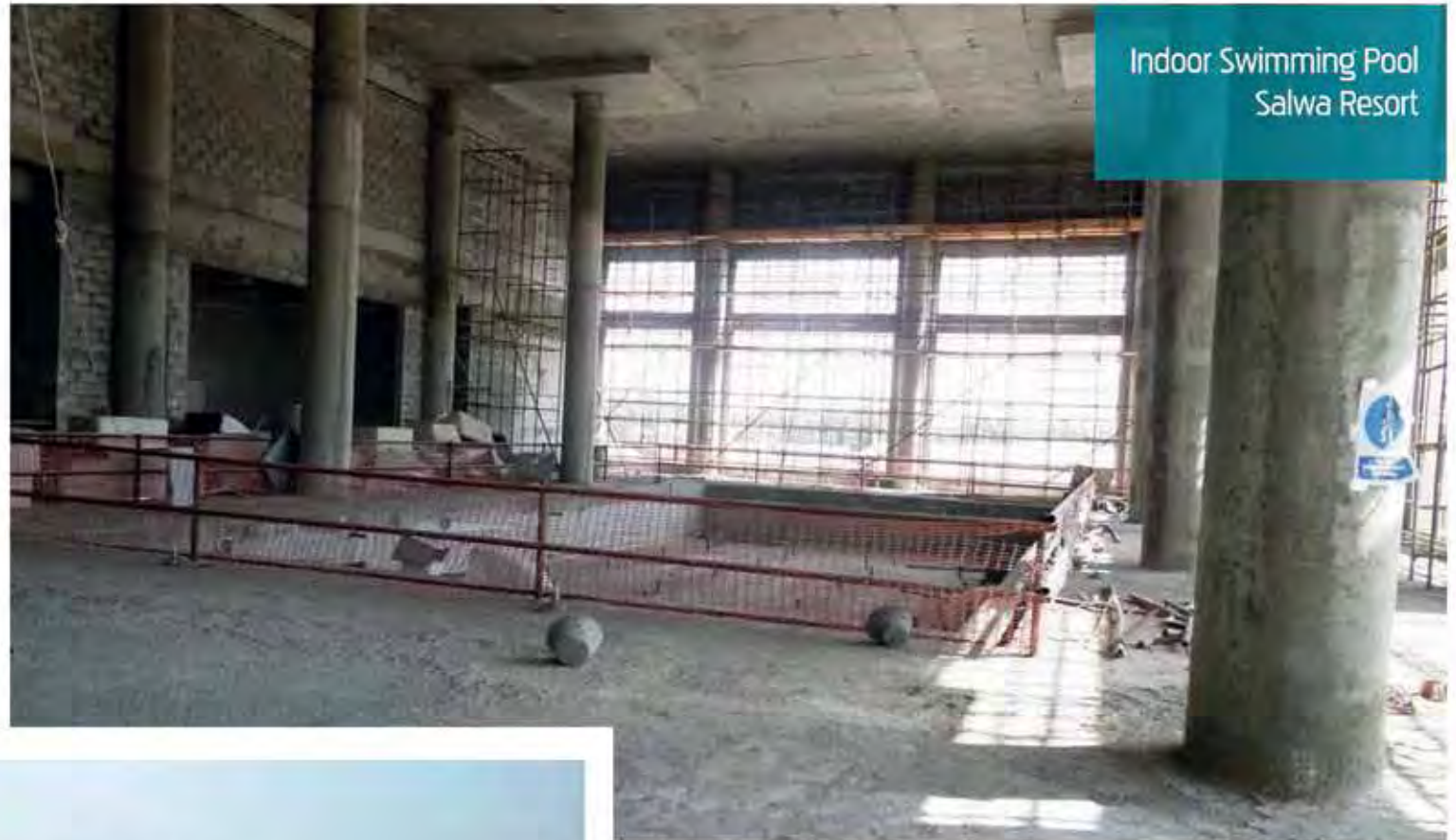
External Painting Works,
Hotel Left Elevation



External Painting Works,
Back of Hotel



ONGOING PROJECTS



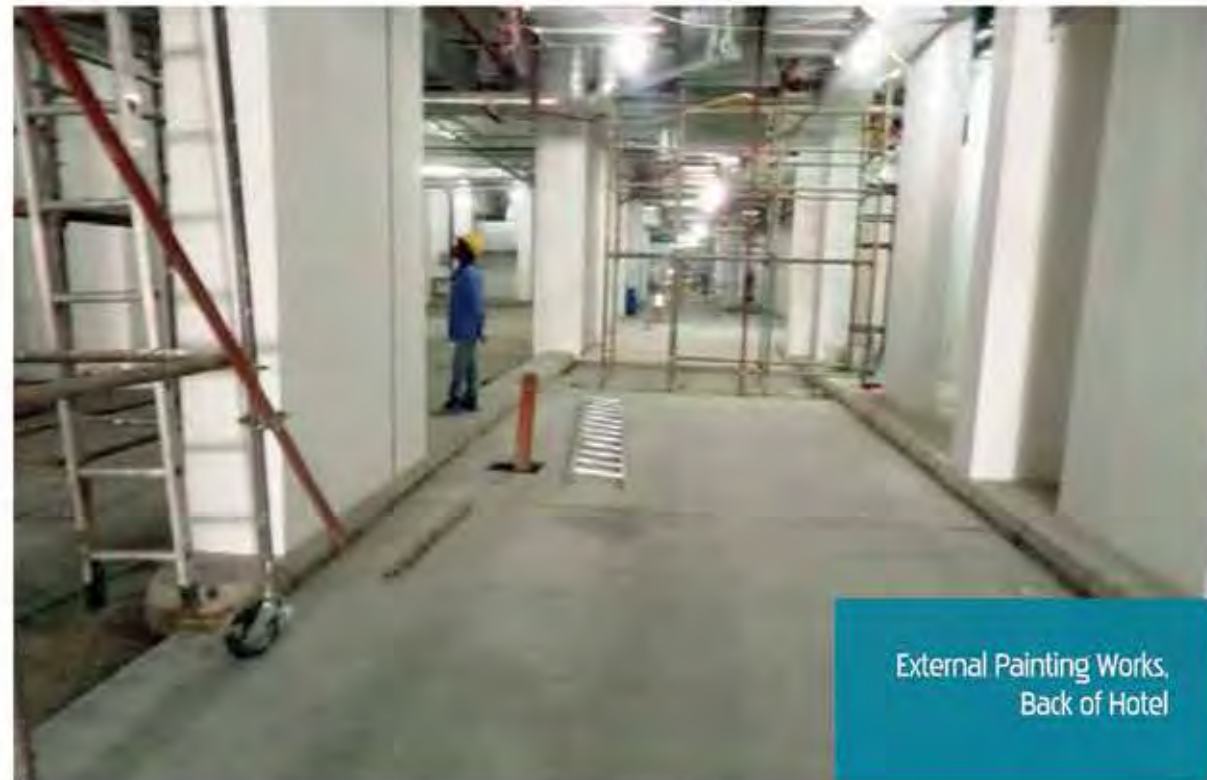
Indoor Swimming Pool
Salwa Resort



Outdoor Swimming Pool
Salwa Resort



Screeding Works
in Basement Driveway



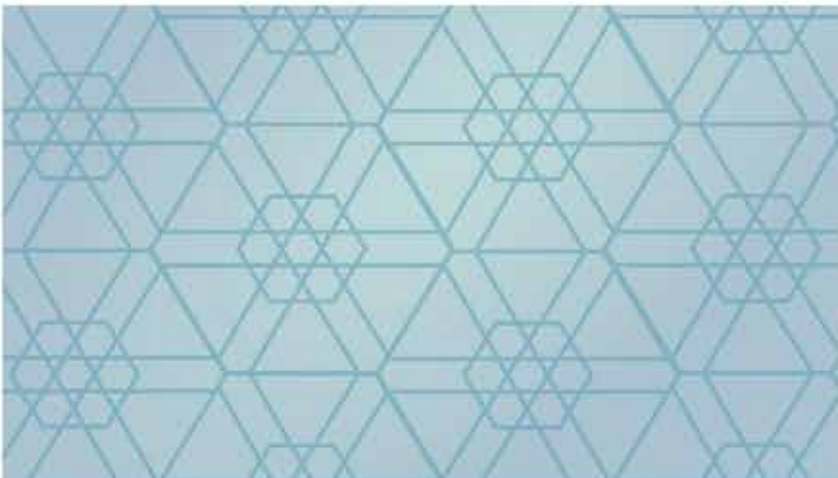
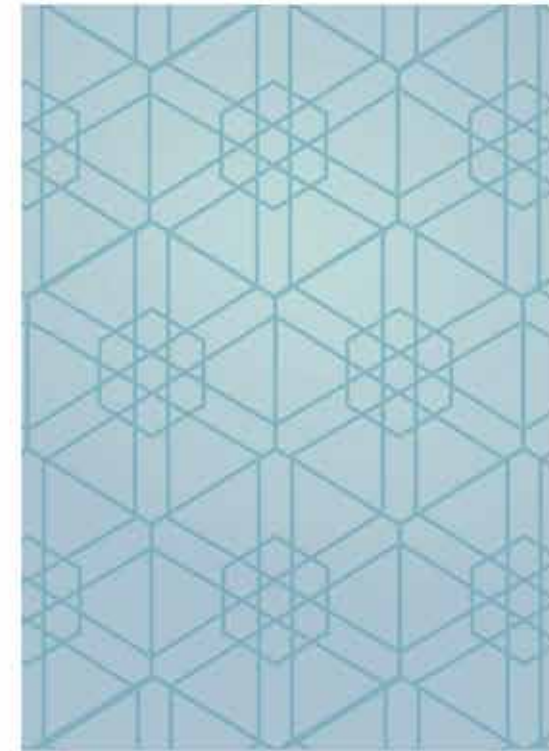
External Painting Works,
Back of Hotel



ONGOING PROJECTS



Plant Room Area
Salwa Resort



Ballroom Area
Salwa Resort



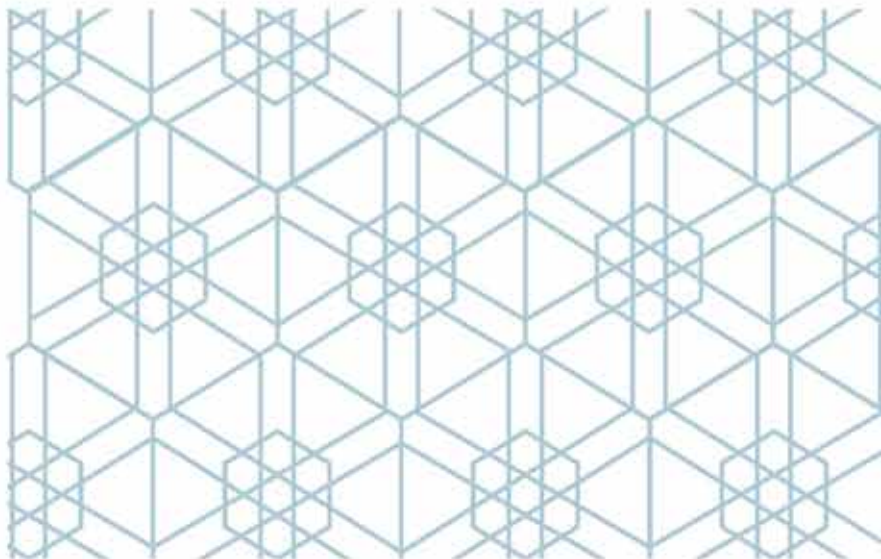
ONGOING PROJECTS



External Painting Works,
In Villas - Salwa Resort



External Plastering Works,
In Villas - Salwa Resort



Front of Mosque
Salwa Resort



Inside of Mosque
External Hallway
Salwa Resort



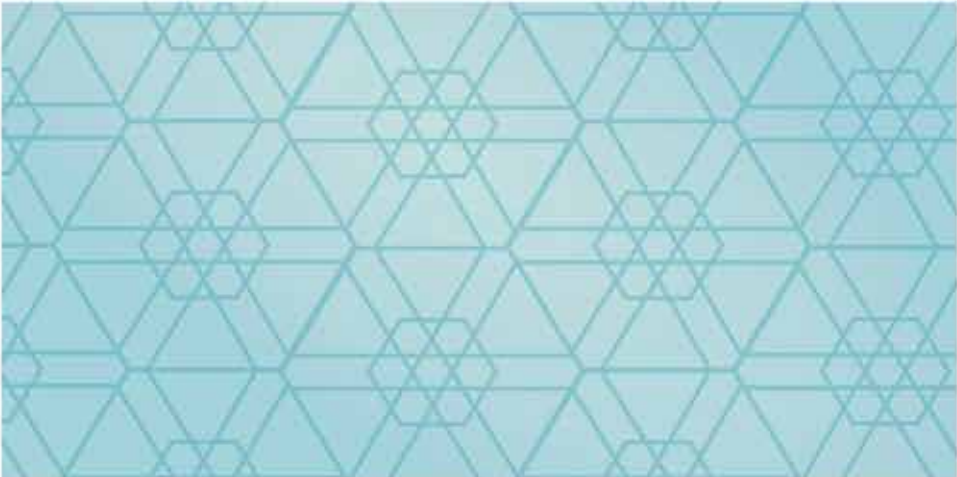
ONGOING PROJECTS



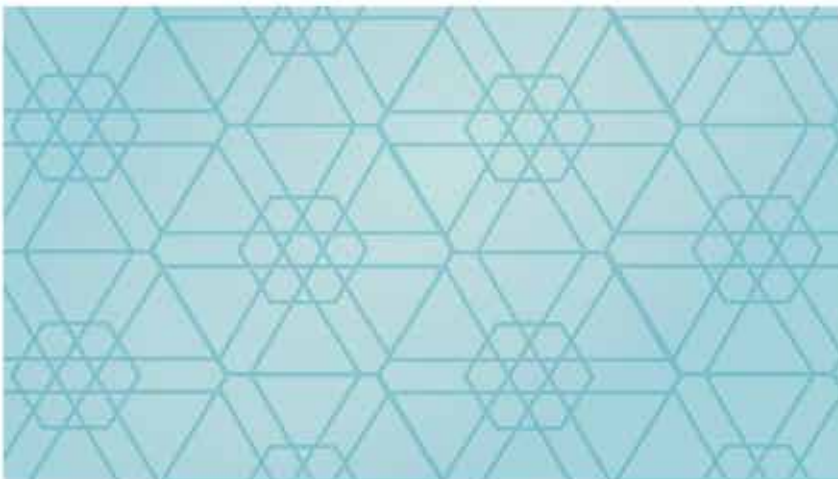
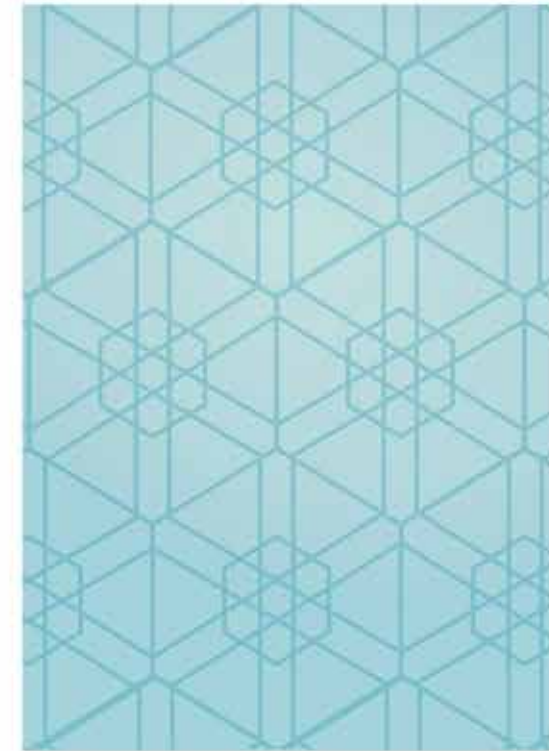
Under Construction
Salwa Resort



Under Construction
Salwa Resort



Road Construction
Salwa Resort

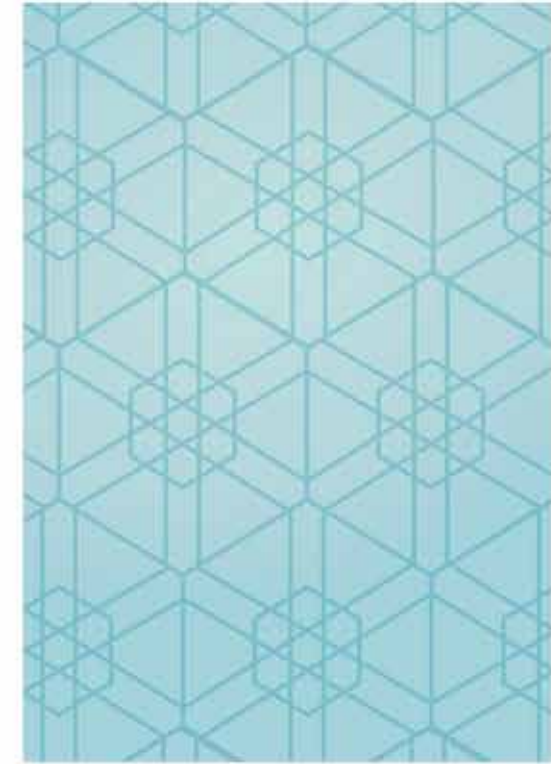


Kerbstones and
Concrete Support Works
Salwa Resort

ONGOING PROJECTS

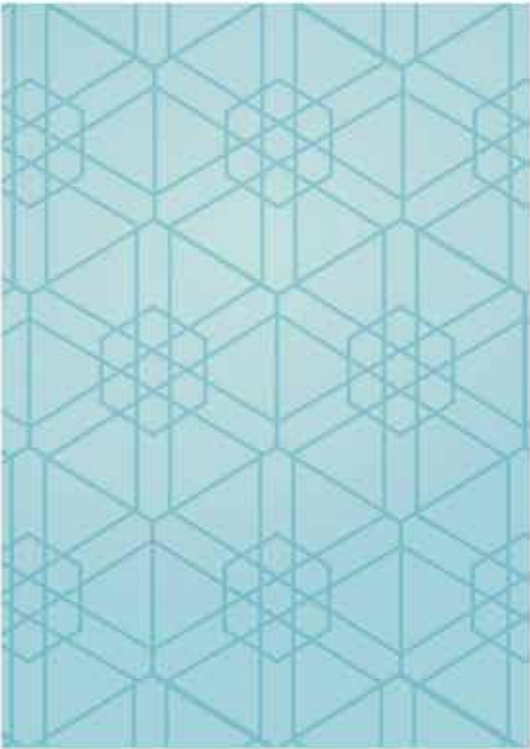


Under Construction
Salwa Resort



Under Construction
Salwa Resort

ONGOING PROJECTS



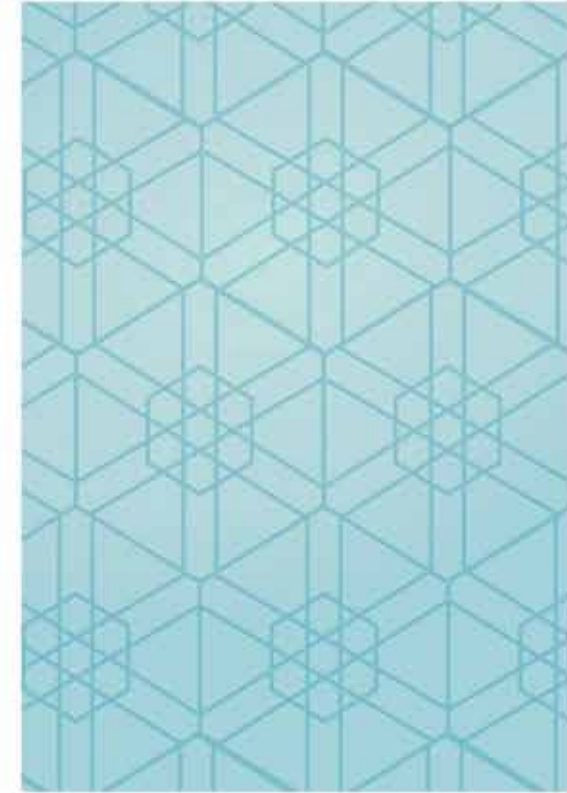
Substation No. 1
Salwa Resort



Substation No. 2
Salwa Resort



Substation No. 3
Salwa Resort



Substation No. 3
Salwa Resort



ONGOING PROJECTS



Water Tank/ Pump Room
Salwa Resort



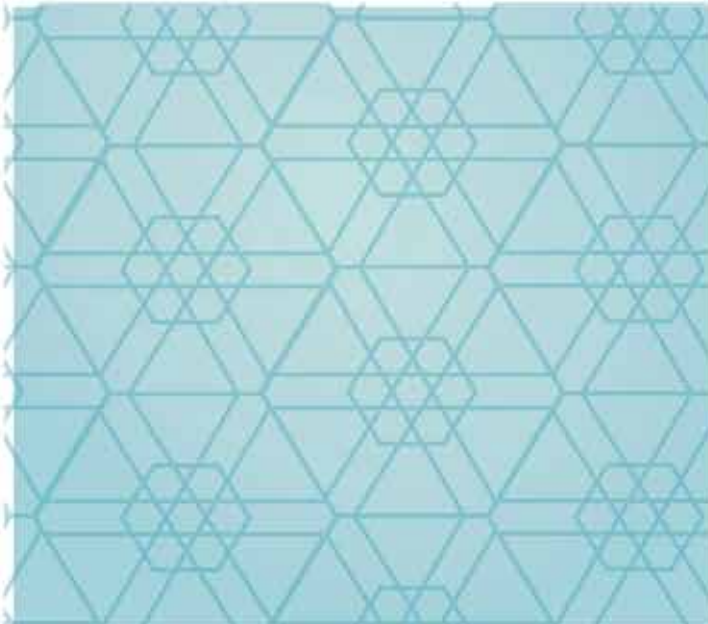
Inside Pump Room
Salwa Resort



Salwa Resort



ONGOING PROJECTS



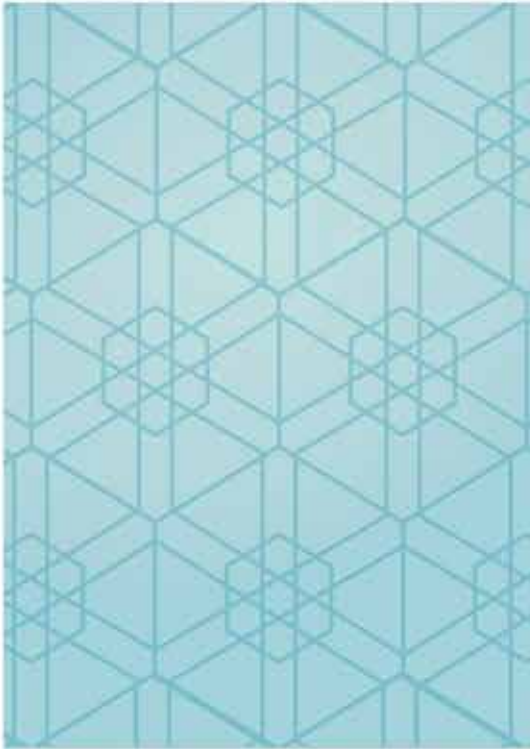


ONGOING PROJECTS

PROJECT TITLE	MUSHEIRIB RESIDENTIAL BUILDING
OWNER	Sheikh Jassim Thani bin Jassim Al Thani
CONSULTANT	ACE Engineering Consultant
CONTRACT PERIOD	36 months
LOCATION	Musheirib Doha
STATUS	ONGOING

PROJECT 4 MUSHEIRIB RESIDENTIAL BUILDING





Concrete Pouring
Musheirib Residential Bldg.



Concrete Pouring
Musheirib Residential Bldg.



ONGOING PROJECTS



Night Construction
Musheirib Residential Bldg.



Night Construction
Musheirib Residential Bldg.



Night Construction
Musheirib Residential Bldg.



Night Construction
Musheirib Residential Bldg.



Musheirib Residential Building



Musheirib Residential Building

Under Construction
Musheirib Residential Bldg.



Under Construction
Musheirib Residential Bldg.



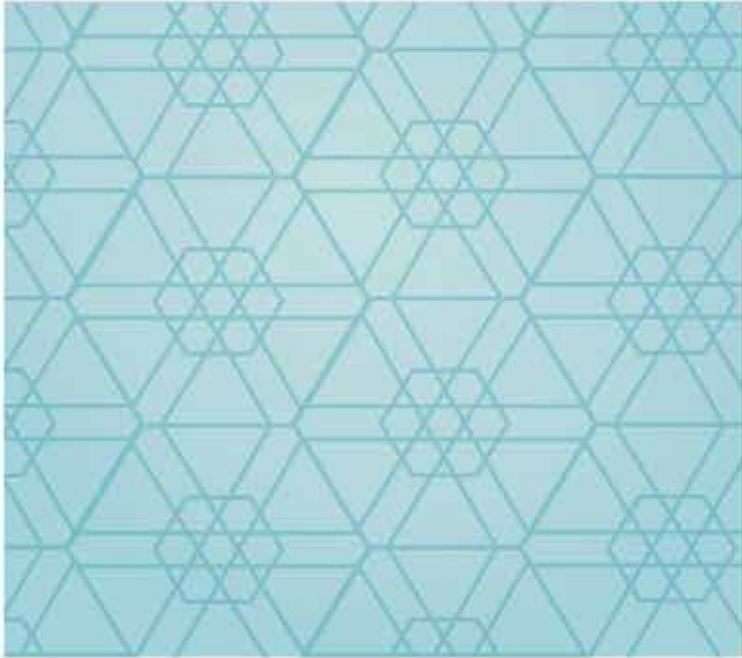
ONGOING PROJECTS



Under Construction
Musheirib Residential Bldg.

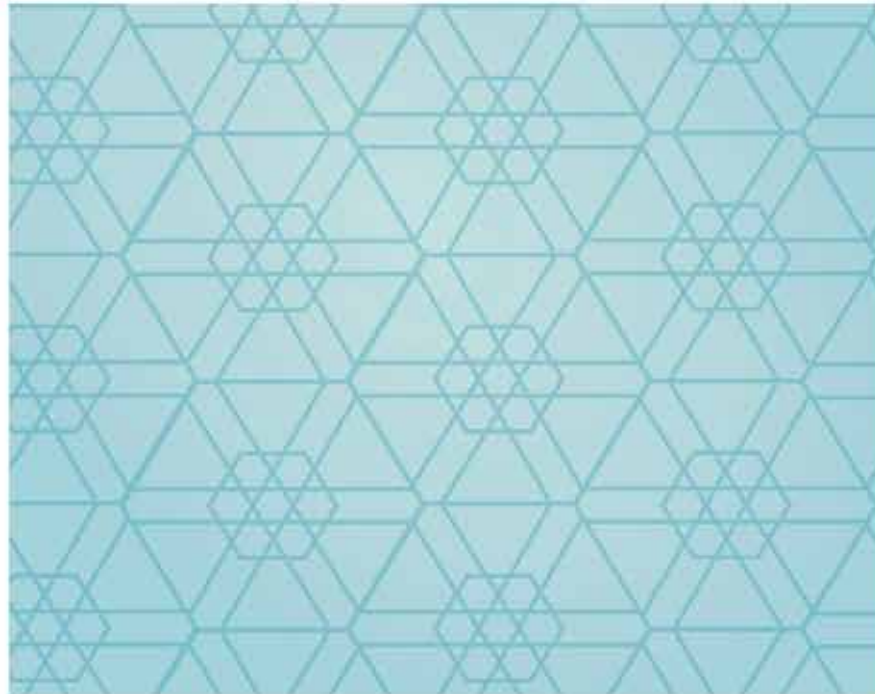


Under Construction
Musheirib Residential Bldg.





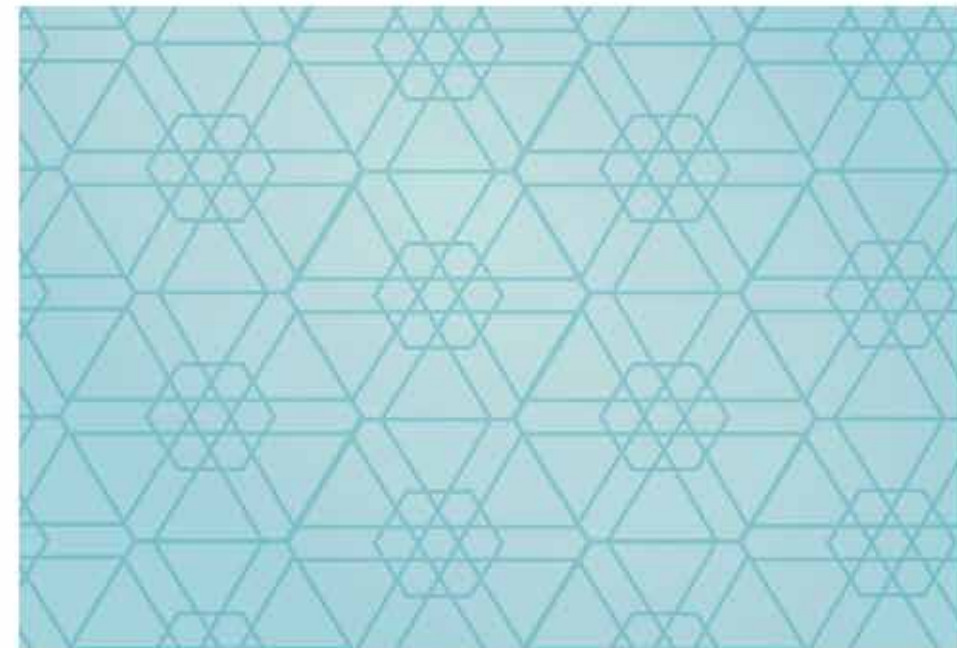
ONGOING PROJECTS



Under Construction
Musheirib Residential Bldg.



Under Construction
Musheirib Residential Bldg.





Musheirib Residential Building

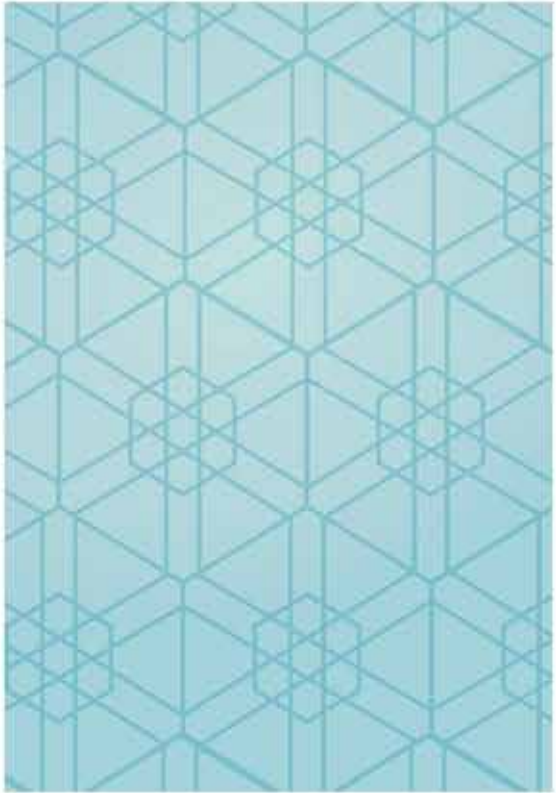


Musheirib Residential Building



ONGOING PROJECTS

Construction Workers
Musheirib Residential Bldg.



Construction Workers
Musheirib Residential Bldg

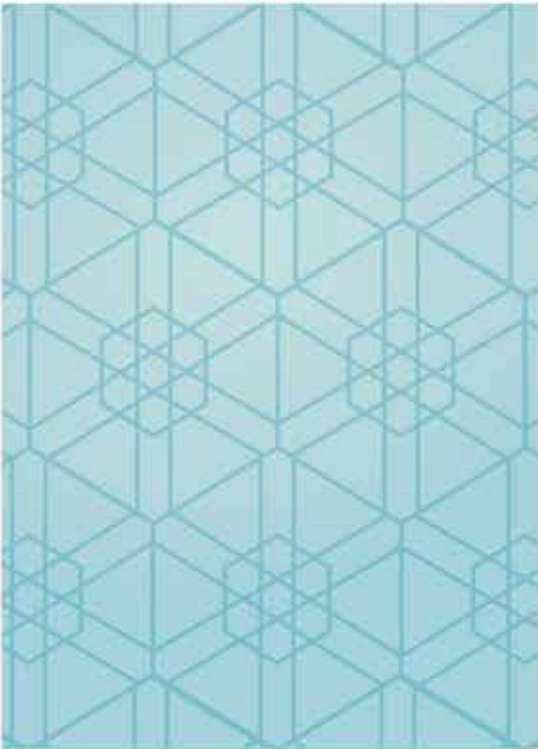
<i>PROJECT TITLE</i>	<i>11 Villas</i>	<i>PROJECT TITLE</i>	<i>11 Villas</i>
<i>OWNER</i>	<i>Sheikh Khalid bin Jassim Al Thani</i>	<i>OWNER</i>	<i>Sheikh Fahad bin Jassim Al Thani</i>
<i>CONSULTANT</i>	<i>Al-Alameia Engineering</i>	<i>CONSULTANT</i>	<i>Al-Alameia Engineering</i>
<i>CONTRACT PERIOD</i>	<i>24 months</i>	<i>CONTRACT PERIOD</i>	<i>24 months</i>
<i>COST</i>	<i>QAR 11,000,000.00</i>	<i>COST</i>	<i>QAR 11,000,000.00</i>
<i>LOCATION</i>	<i>Zhagawa</i>	<i>LOCATION</i>	<i>Zhagawa</i>
<i>STATUS</i>	<i>DONE</i>	<i>STATUS</i>	<i>DONE</i>

<i>PROJECT TITLE</i>	<i>11 Villas</i>	<i>PROJECT TITLE</i>	<i>11 Villas</i>
<i>OWNER</i>	<i>Sheikh Jabor bin Jassim Al Thani</i>	<i>OWNER</i>	<i>Sheikha S bin Jassim Al Thani</i>
<i>CONSULTANT</i>	<i>Al-Alameia Engineering</i>	<i>CONSULTANT</i>	<i>Al-Alameia Engineering</i>
<i>CONTRACT PERIOD</i>	<i>24 months</i>	<i>CONTRACT PERIOD</i>	<i>24 months</i>
<i>COST</i>	<i>QAR 11,000,000.00</i>	<i>COST</i>	<i>QAR 11,000,000.00</i>
<i>LOCATION</i>	<i>Zhagawa</i>	<i>LOCATION</i>	<i>Zhagawa</i>
<i>STATUS</i>	<i>DONE</i>	<i>STATUS</i>	<i>DONE</i>

PROJECT 5 44 VILLA COMPOUND



ONGOING PROJECTS



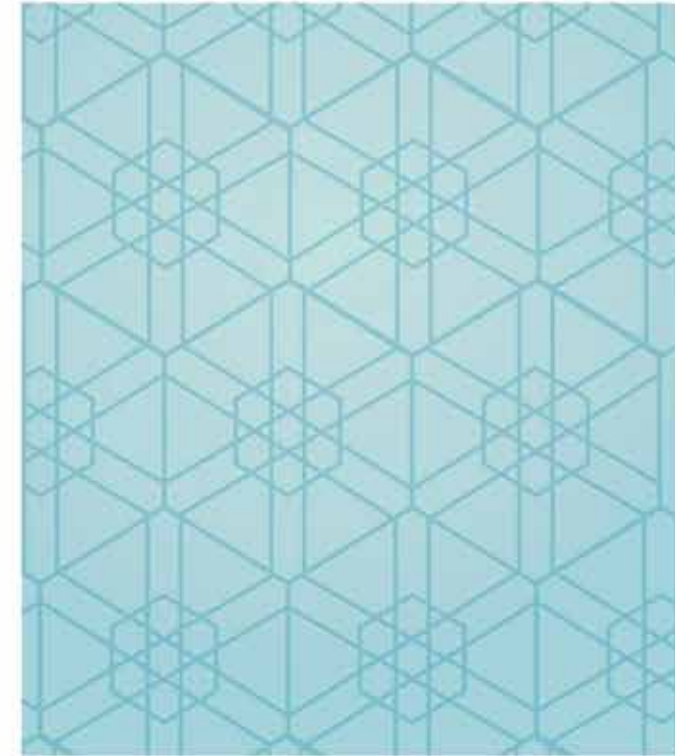
Under Construction
44 Villa Compound



Under Construction
44 Villa Compound



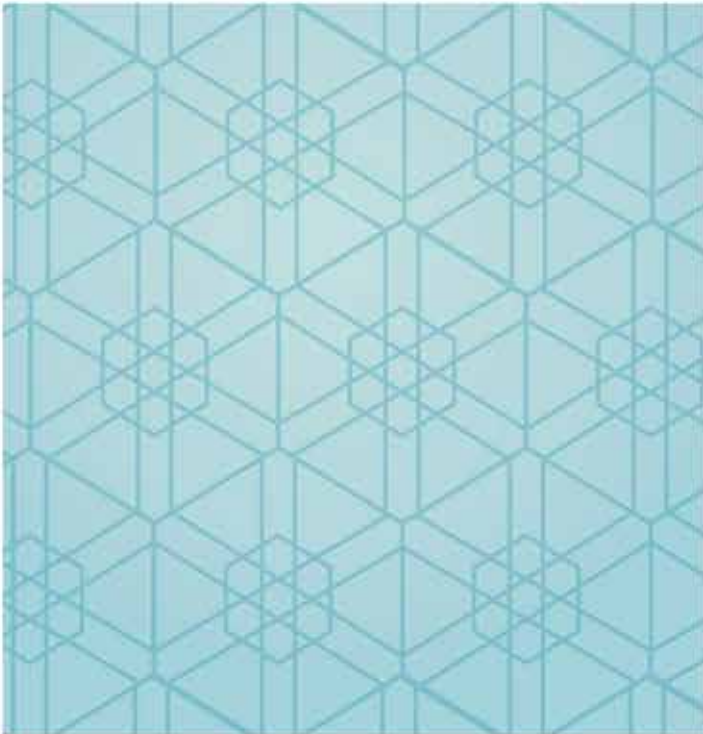
Under Construction
44 Villa Compound



Under Construction
44 Villa Compound



ONGOING PROJECTS



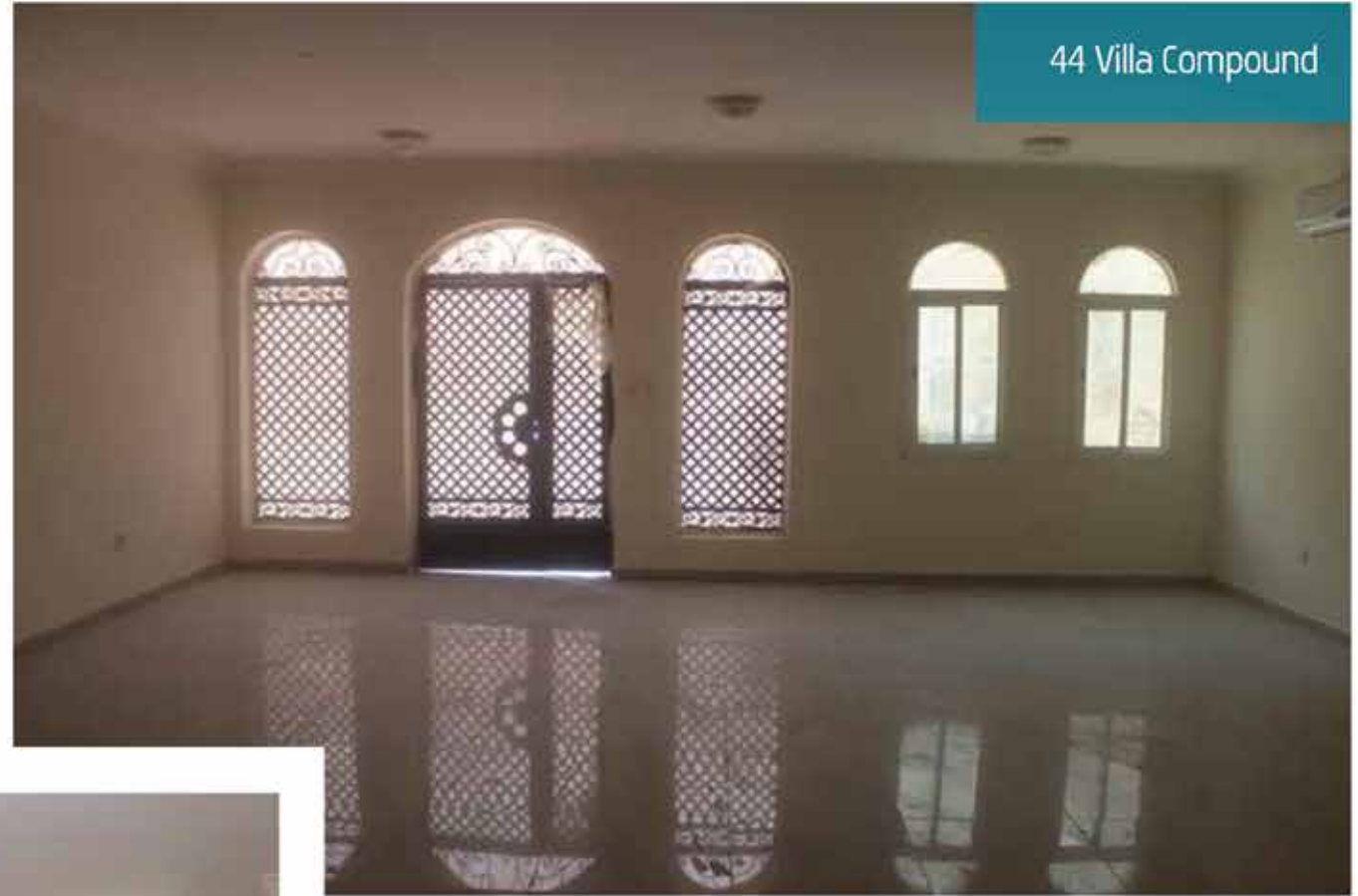
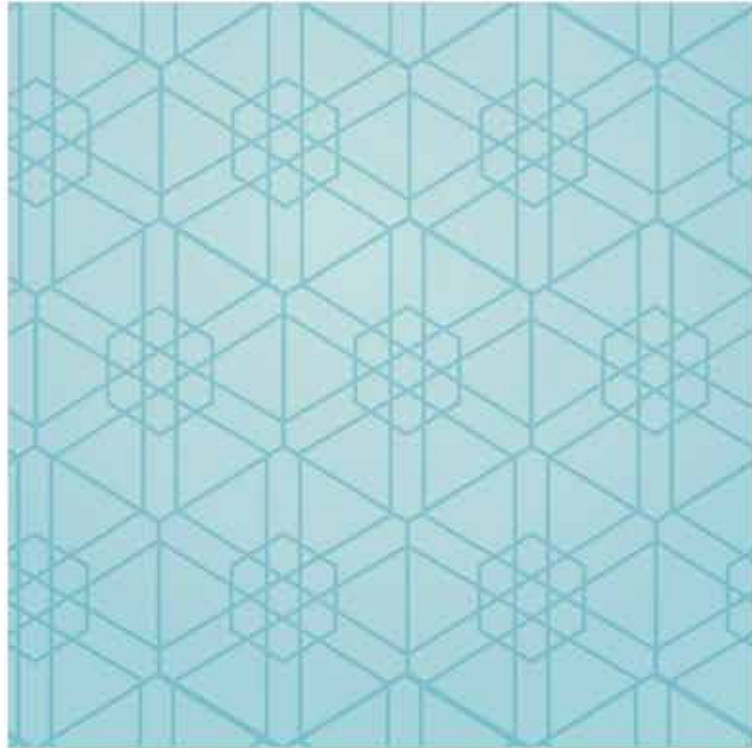
44 Villa Compound



44 Villa Compound



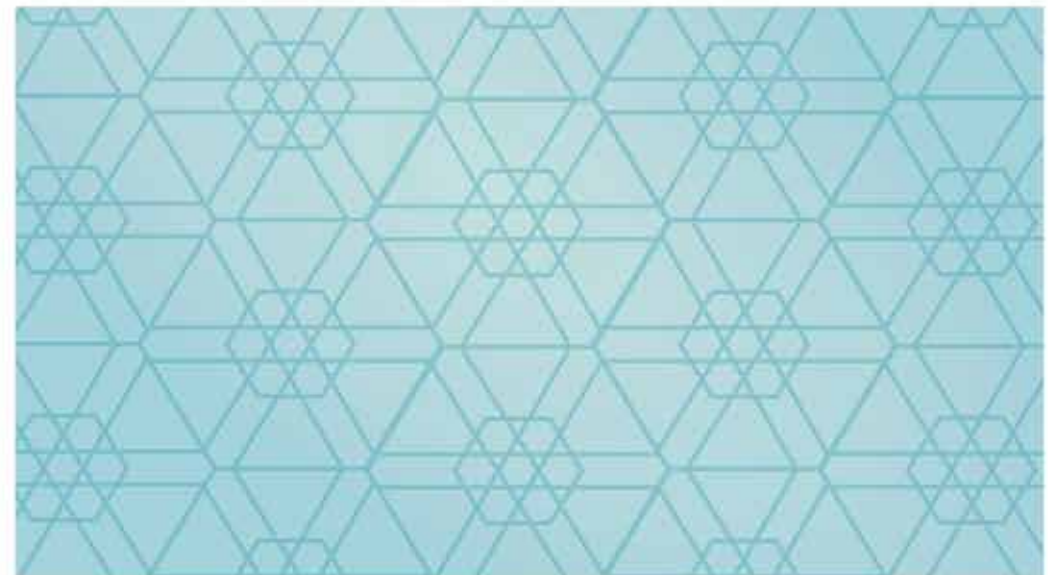
ONGOING PROJECTS



44 Villa Compound



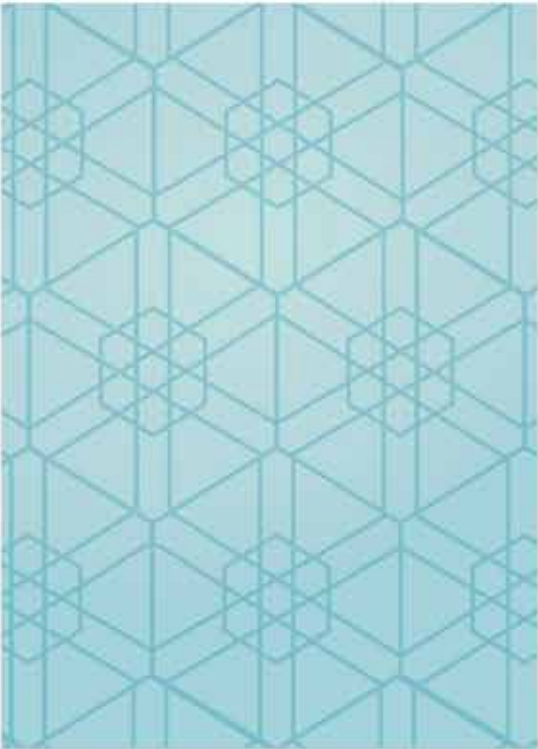
44 Villa Compound





Under Construction
44 Villa Compound

ONGOING PROJECTS



Under Construction
44 Villa Compound



Under Construction
44 Villa Compound



Under Construction
44 Villa Compound



Under Construction
44 Villa Compound



ONGOING PROJECTS



PROJECT 6

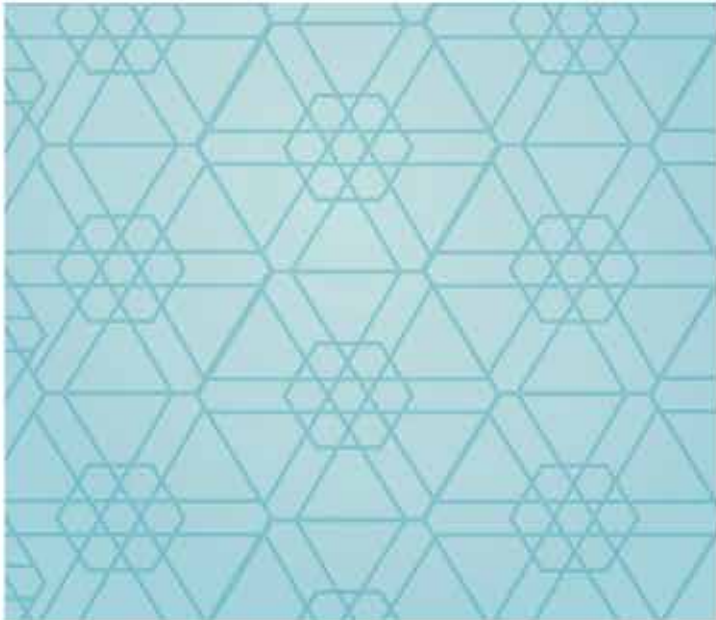
15 Villa Compound



PROJECT TITLE	15 VILLA COMPOUND
OWNER	Sheikh Faisal Jassim Thani Jassim Al Thani
CONSULTANT	Al-Fagar Engineering Consultant
LOCATION	Zhagawa
STATUS	ONGOING
SUMMARY	<p>15 Villas (a,b,c) + Sports Club Model(a) Total are for each Villa : 150m² Model(b) Total area for each Villa : 144m² Model(c) Total are for each Villa: 144m² Total area for Sports Club: 409m² Total area for the Compound: 2761 m²</p>



ONGOING PROJECTS



15 Villa Compound



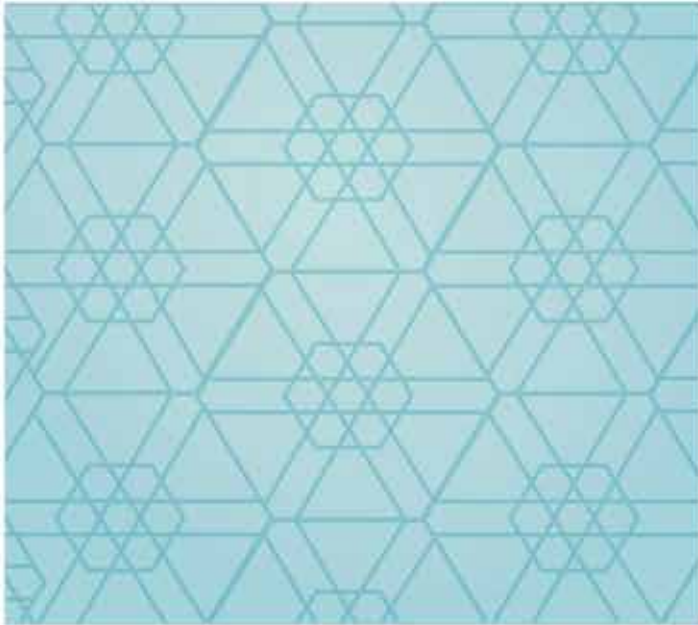
15 Villa Compound



15 Villa Compound



15 Villa Compound



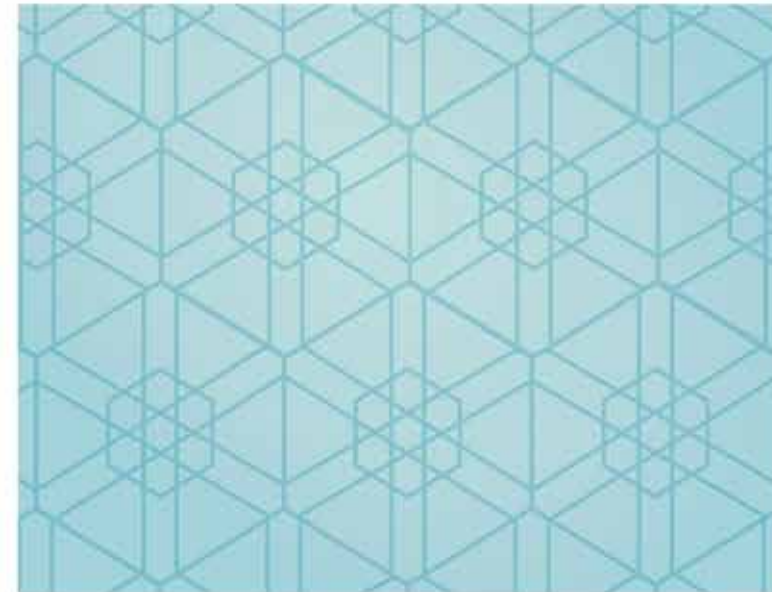
ONGOING PROJECTS

PROJECT TITLE	62 Villa Compound
OWNER	Sheikh Jassim Al Thani
CONSULTANT	Arabian Architect Group
CONTRACT PERIOD	30 months
CONTRACT COST	QAR 65,000,000.00
LOCATION	Zhagawa
STATUS	ONGOING

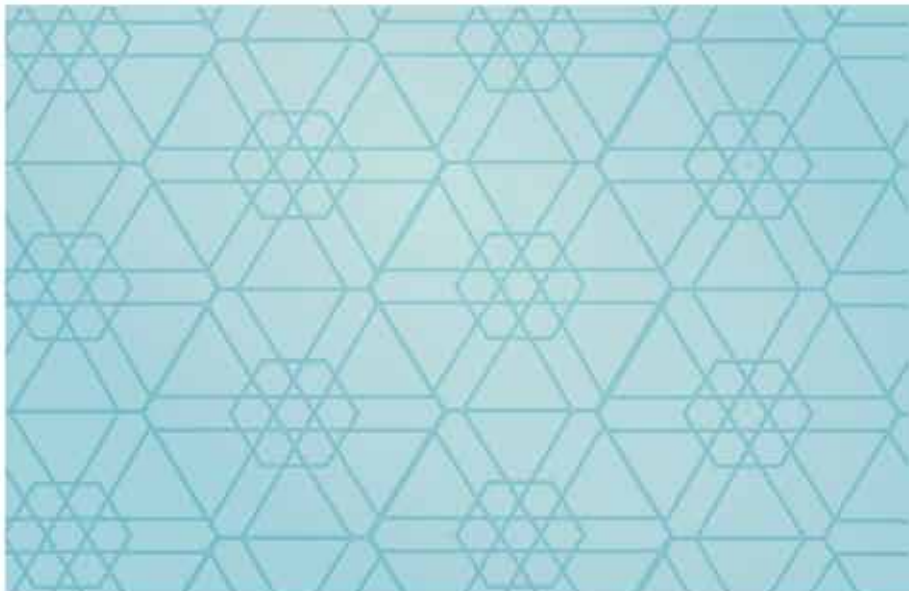


PROJECT 7 62 Villa Compound

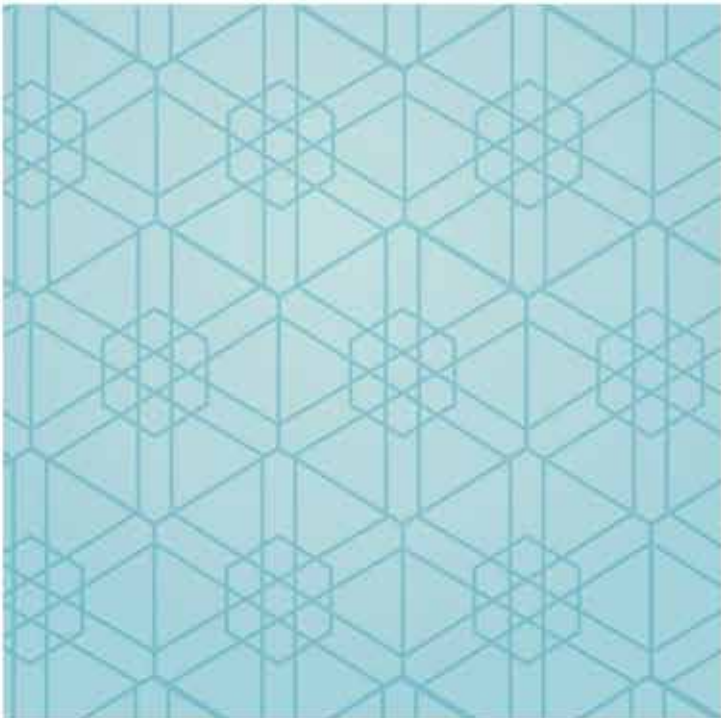
Under Construction
62 Villa Compound



Under Construction
62 Villa Compound



ONGOING PROJECTS



Wall Plastering
62 Villa Compound



Under Construction
62 Villa Compound



PRIVATE CARS					
Serial No.	TYPE OF VEHICLE	MANUFACTURING YEAR	PLATE NUMBER	DATE OF LICENSE	CHASSIS NUMBER
1	Mitsubishi Outlander	2007	60083	15/1/2015	JE4LS21H17U719368
2	Toyota Prado	2007	364491	5/10/2014	JTEBU25J875071045
3	Mitsubishi Lancer	2008	61198	30/4/2015	JE3BB36P98U741416
4	Daihatsu Terios	2006	356158	12/10/2014	JD2GJ522261008820
5	Mitsubishi Lancer	2008	61285	1/5/2015	JEJBB36PJ8U738821
6	Mitsubishi Lancer	2008	219483	7/9/2014	JE3BB36C48U716484
7	Nissan Maxima	2003	269548	10/6/2014	JN1CA31S71T564999
8	Kia Picanto	2008	388411	24/2/2015	KNABA24358T536813
9	Kia Picanto	2008	388412	3/3/2015	KNABA24358T512687
10	Nissan Pathfinder	2005	285067	24/12/2014	JN8DR05Y15W802636
11	Mitsubishi Pajero S	2010	201480	17/9/2014	MMEMU71N2AF014227
12	Mitsubishi Pajero S	2010	200869	15/10/2014	MMEMU71N7AF014241
13	Mitsubishi Pajero	2011	460072	30/4/2015	JE4MR62N9BJ707913
14	Mitsubishi Pajero S	2007	424163	13/5/2015	JMYLRV93W7J714238
15	Nissan Pathfinder	1998	187689	9/6/2015	JN1VAZR50Z0001322
16	Nissan Pathfinder	2003	223305	13/1/2015	JN8DR05Y33W606596
17	Chevrolet Aveo	2006	320855	24/11/2014	KLITJ58YX6B561392
18	Nissan Sunny	2004	122712	13/11/2014	JN1EN61C64W013909
19	Mitsubishi Lancer	2011	478452	27/11/2014	KNAMH8174C6470955
20	Kia Carnival	2012	495154	3/4/2015	JE3BB36P4BU704829
21	Mitsubishi Lancer	2011	305380	23/10/2014	JE3BB36P3BU705504
22	Mitsubishi Lancer	2011	306774	28/10/2014	JE3BB36P4BU709349



LIST OF COMPANY OWNED VEHICLES



23	Mitsubishi Lancer	2011	327802	23/10/2014	JE3BB36P4BU709349
24	Mitsubishi Lancer	2011	306276	23/10/2014	JE3BB36P9BU706205
25	Mitsubishi Lancer	2011	305016	23/10/2014	JEJBB36PXBU704527

LIGHT VEHICLES : SMALL PICKUP

Serial No.	TYPE OF VEHICLE	MANUFACTURING YEAR	PLATE NUMBER	DATE OF LICENSE	CHASSIS NUMBER
1	Mitsubishi Pickup	2011	95524	17/7/2015	MMBMG25HXBD040969
2	Mitsubishi Pickup	2008	69984	9/10/2014	MMBMG25H38D082327
3	Nissan Pickup	2006	132361	29/5/2014	JN6DD23Y56X041451
4	Nissan Pickup	2005	124821	23/10/2014	JN6DD23S55X174656
5	Mitsubishi Pickup	2007	153296	17/3/2015	MMBMG25H07D050210
6	Mitsubishi Pickup	2007	153297	23/2/2015	MMBMG25H87D049340
7	Toyota Hillux	2006	146883	6/5/2015	MR0EX19G863021761
8	Nissan Pickup	1999	84224	3/4/2015	JN6BD23S4XX034818
9	Nissan Pickup	2003	95705	10/9/2014	JN6BD23Y22A720470
10	Nissan Pickup (small)	2003	106349	3/2/2015	JN6DD23Y53X025505

LIGHT VEHICLES : LARGE PICKUP

Serial No.	TYPE OF VEHICLE	MANUFACTURING YEAR	PLATE NUMBER	DATE OF LICENSE	CHASSIS NUMBER
1	Toyota Pickup 3 tons	2009	197231	22/1/2015	JHGUF11759K001021
2	Mitsubishi pickup Crane	2007	156556	4/2/2015	JL7BCE1J97K013755
3	Mitsubishi pickup 3 tons	2007	153298	18/6/2015	JL7BCE1J07K012154
4	Mitsubishi Pickup	2006	138973	20/10/2014	JL7BCE1J36K015001
5	Mitsubishi Pickup	2007	176663	10/3/2015	JL7BCE1J57K030715
6	Mitsubishi Diesel Tank	2009	45661	24/2/2015	JL7BCE1J69K011464

LIST OF COMPANY OWNED VEHICLES

7	Mitsubishi Pickup	2008	183584	10/3/2015	JL7BCE1J08K008039
8	Mitsubishi Pickup	2011	140668	11/10/2014	JL7BCE1J2DK002785
9	Mitsubishi Pickup	2011	140673	11/10/2014	JL7BCE1J9DK003609

BUSES

Serial No.	TYPE OF VEHICLE	MANUFACTURING YEAR	PLATE NUMBER	DATE OF LICENSE	CHASSIS NUMBER
1	Toyota Microbus	2007	170259	9/10/2014	JTGRX12P878003634
2	Mitsubishi 30 seater bus	2006	139254	23/4/2015	JL5B3G6P26PD04734
3	Daewoo Bus	2008	63485	24/11/2014	KL5UM52BE8U001600
4	Daewoo Bus	2009	34547	7/10/2014	KL5UM52BE9U000102
5	Zhong Tong Large Bus	2010	217509	19/3/2015	LDY6GS9D0A0001468
6	Zhong Tong Large Bus	2010	205806	5/3/2015	LDY6GS9D890002377
7	Zhong Tong Large Bus	2010	232001	6/5/2015	LDY6GS9D7A0001466
8	Zhong Tong Bus 35 Seater Bus	2011	225393	13/6/2015	LJ16AR5E6B2007067
9	Zhong Tong Bus 35 Seater Bus	2011	224392	13/1/2015	LJ16AR5E8B2007068
10	Zhong Tong Bus 35 Seater Bus	2011	246839	23/4/2015	LJ16AR5E4B2007066
11	Fiat (Van)	2009	138234	3/2/2015	ZFAEA766591595045
12	Hyundai H-Wen	2009	211385	1/5/2015	KMJWAH7H29U119461
13	Zhong Tong Bus 35 Seater Bus	2011	250630	9/6/2015	LJ16AR5EXB2007069
14	Zhong Tong Bus 35 Seater Bus	2012	74109	16/9/2014	LJ16AR5D8C2006589
15	Zhong Tong Large Bus	2012	129746	24/5/2015	LDY6GS9D2G0001913

TRAILERS

Serial No.	TYPE OF VEHICLE	MANUFACTURING YEAR	PLATE NUMBER	DATE OF LICENSE	CHASSIS NUMBER
1	Mercedes Truck (Head)	2006	147318	3/2/2015	WDB9341617L145631

LIST OF COMPANY OWNED VEHICLES



2	Mitsubishi Truck (Head)	2006	147317	3/2/2015	WDB9340127L145415
3	Mitsubishi Truck (Head)	2007	147319	24/2/2015	WDBCHDAA37L156033
4	Renault Truck (Head)	2008	184198	28/1/2015	VF634KPA18D000582
5	Renault Backhoe Loader	2008	182963	9/10/2014	VF634DPA18D003090
6	Renault Backhoe Loader	2008	184199	10/11/2014	VF634DPA28D003230
7	Renault Water Tanker (Head)	2009	31283	8/9/2014	VF634GPA59D001202
8	Chinese Water Tanker	2011	223308	15/10/2013	LZZ5BLNF9BA629865
9	Chinese Water Tanker	2011	172656	7/4/2015	LZZ5BLNF0BA629866
10	Chinese Backhoe Loader	2011	225430	15/1/2015	LZZ5EXSB9BA629915
11	Chinese Backhoe Loader	2011	225432	19/12/2013	LZZ5EXSB3BA629912
12	Chinese Backhoe Loader	2011	225476	3/2/2015	LZZ5EXSB5BA629913
13	Chinese Backhoe Loader	2011	225446	27/11/2014	LZZ5EXSB7BA629914
14	Chinese Trailer (Head)	2011	225477	16/12/2014	LZZ5CCVC5BN630359
15	Chinese Trailer (Head)	2011	225491	30/11/2014	LZZ5CCVC9BW630360

TRAILER

Serial No.	TYPE OF VEHICLE	MANUFACTURING YEAR	PLATE NUMBER	DATE OF LICENSE	CHASSIS NUMBER
1	Container	2006	14564	24/11/2014	JHGUF11759K001021
2	Container	2009	25751	20/1/2015	JL7BCE1J97K013755
3	Container	2006	14570	13/1/2015	JL7BCE1J07K012154
4	Surface	2005	10793	10/12/2014	JL7BCE1J36K015001
5	Lobed	2009	25822	14/12/2014	JL7BCE1J57K030715
6	Container	2009	25749	25/1/2015	JL7BCE1J69K011464
7	Water Tanker Trailer	2007	17756	8/9/2014	JL7BCE1J57K030715
8	Container	2006	14945	17/11/2014	JL7BCE1J69K011464

LIST OF COMPANY OWNED VEHICLES

9	Container	2009	25735	28/1/2015	FPTT0032
10	Surface	2012	31973	20/4/2015	QVSF2012-0528
11	Sewage Trailer Truck	2012	32368	14/8/2015	QVSF-TRT-22-0181

HEAVY EQUIPMENT

Serial No.	TYPE OF VEHICLE	MANUFACTURING YEAR	PLATE NUMBER	DATE OF LICENSE	CHASSIS NUMBER
1	JCB Asphalt Flattener	2007	170259	9/10/2014	JTGRX12P878003634
2	JCB Asphalt Flattener	2006	139254	23/4/2015	JL5B3G6P26PDO4734
3	Hamm Asphalt Roller	2008	63485	24/11/2014	KL5UM52BE8U001600
4	Grove Crane	2009	34547	7/10/2014	KL5UM52BE9U000102
5	CAT Excavator	2010	217509	19/3/2015	LDY6GS9D0A0001468
6	CAT Excavator	2010	205806	5/3/2015	LDY6GS9D890002377
7	JCB Excavator	2010	232001	6/5/2015	LDY6GS9D7A0001466
8	CAT Excavator	2011	225393	13/6/2015	LJ16AR5E6B2007067
9	JCB Excavator	2011	224392	13/1/2015	LJ16AR5E8B2007068
10	JCB Excavator	2011	246839	23/4/2015	LJ16AR5E4B2007066
11	JCB Excavator	2009	138234	3/2/2015	ZFAEA766591595045
12	Komatsu Excavator	2009	211385	1/5/2015	KMJWAH7H29U119461
13	Komatsu Excavator	2011	250630	9/6/2015	LJ16AR5EXB2007069
14	Komatsu Excavator	2012	74109	16/9/2014	LJ16AR5D8C2006589
15	JCB Sheol Loader	2012	129746	24/5/2015	LDY6GS9D2G0001913
16	CAT Loader	2012	74109	16/9/2014	LJ16AR5D8C2006589
17	CAT Loader	2012	129746	24/5/2015	LDY6GS9D2G0001913
18	Backhoe Loader	2012	74109	16/9/2014	LJ16AR5D8C2006589
19	Backhoe Loader	2012	129746	24/5/2015	LDY6GS9D2G0001913

LIST OF COMPANY OWNED VEHICLES



20	Forklift	2008	30069	12/3/2015	JCB5APSGC681511821
21	Forklift	2008	26615	15/9/2014	YC5000000TBJ00204
22	JCB Forklift	2008	28472	18/7/2015	JCBTLT35T81176374
23	Forklift	2011	40817	15/9/2014	JCB5AFKJ01523391
24	Sheol small Bob CAT	2007	23313	15/9/2014	5292160055
25	Sheol small Bob CAT	2008	27095	11/9/2014	529218130
26	Sheol small Bob CAT	2011	41404	10/12/2014	AC3070292
27	Sheol small Bob CAT	2013	53734	22/1/2015	A1Z777457
28	Hoist	2011			
29	Hoist	2009			
30	Hoist	2010			
31	Portcabine	2003			
32	Portcabine	2003			
33	Portcabine	2005			
34	Portcabine	2005			
35	Portcabine	2008			
36	Portcabine	2008			
37	Portcabine	2008			
38	Portcabine	2011			
39	Portcabine	2011			
41	Tower Crane	2008			
42	Tower Crane	2010			
43	Tower Crane	2013			

Company Owned Heavy Equipments



Company Owned Heavy Equipments



COMPANY OWNED VEHICLES



Company Owned Heavy Equipments



Company Owned Heavy Equipments



Company Owned Heavy Equipments



Company Owned Heavy Equipments

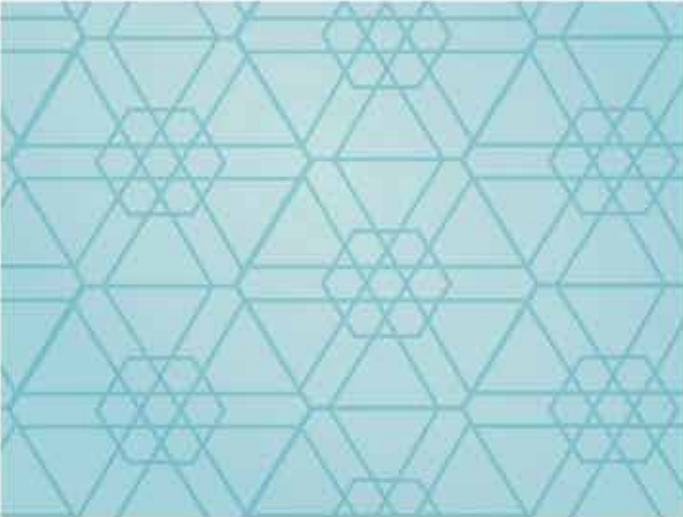
COMPANY OWNED VEHICLES



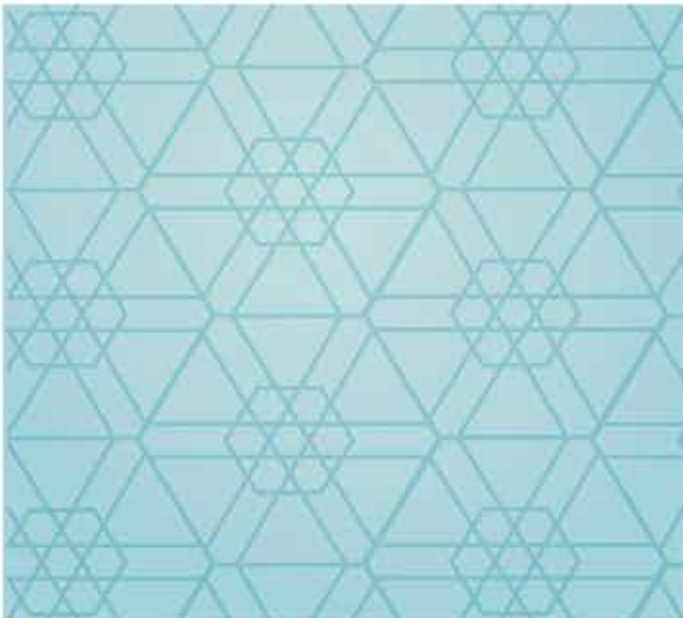
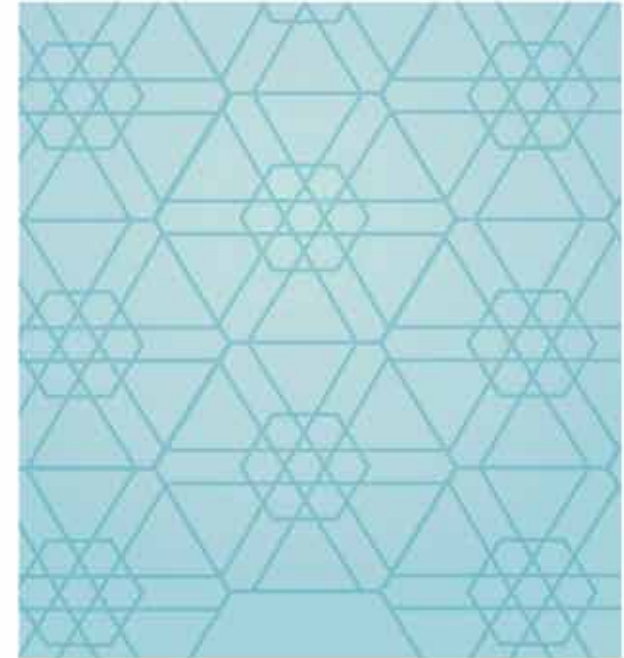
Company Owned Buses



Company Owned Buses/ Minivan



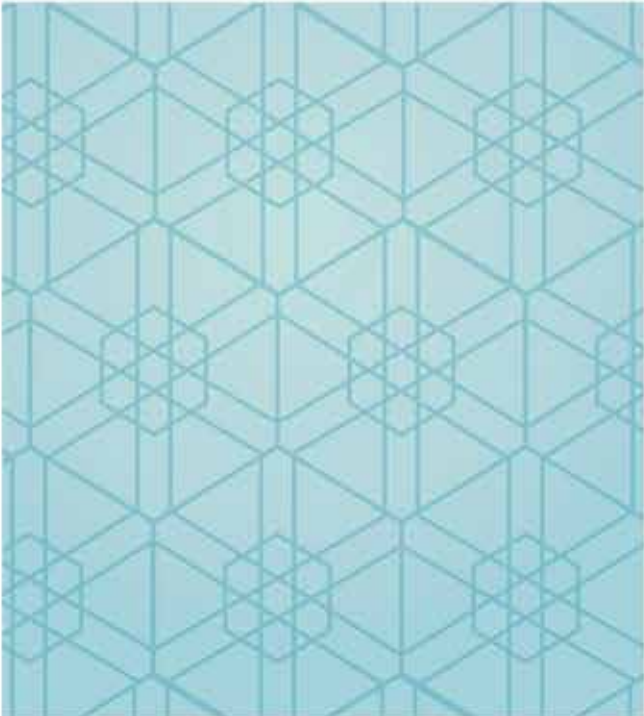
Company Owned Buses



Company Owned Buses



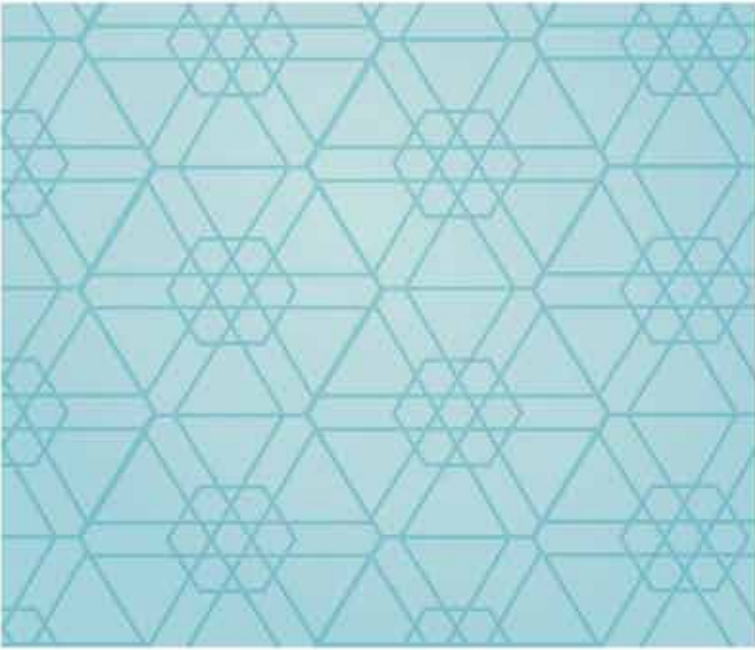
COMPANY OWNED VEHICLES

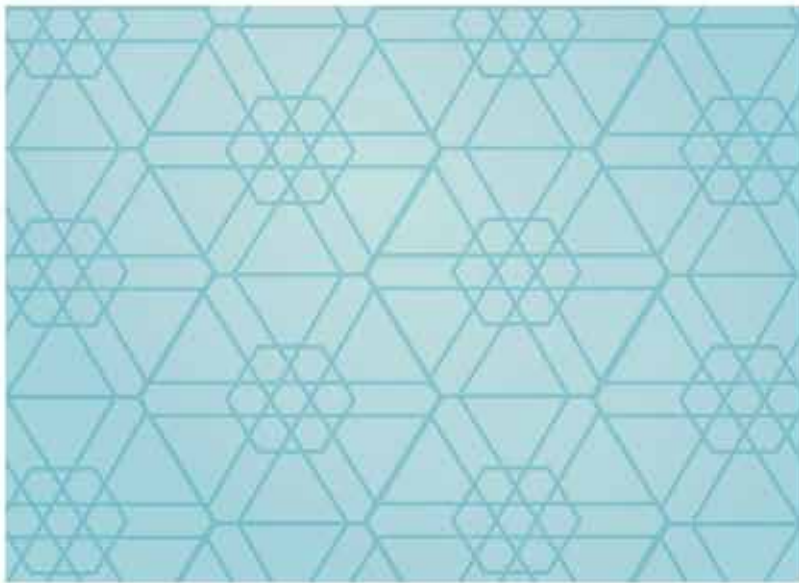
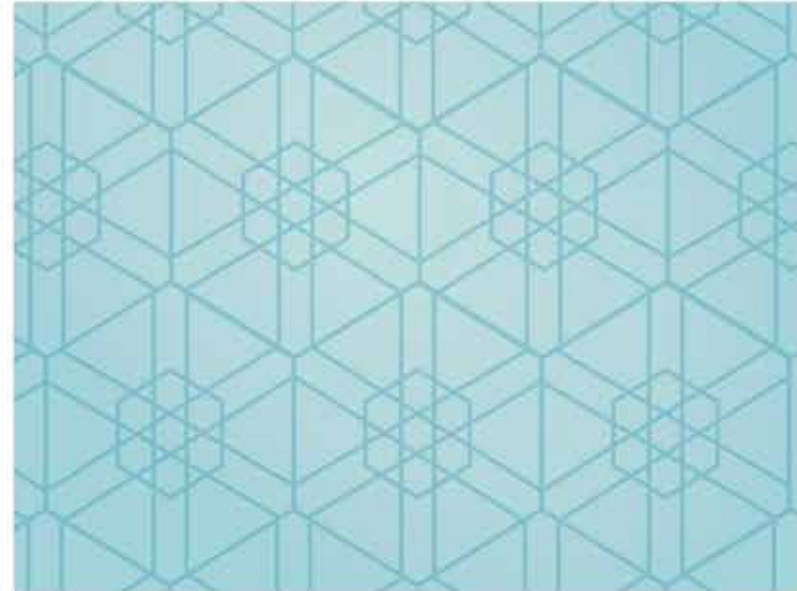


Company Owned Buses



Company Owned Buses





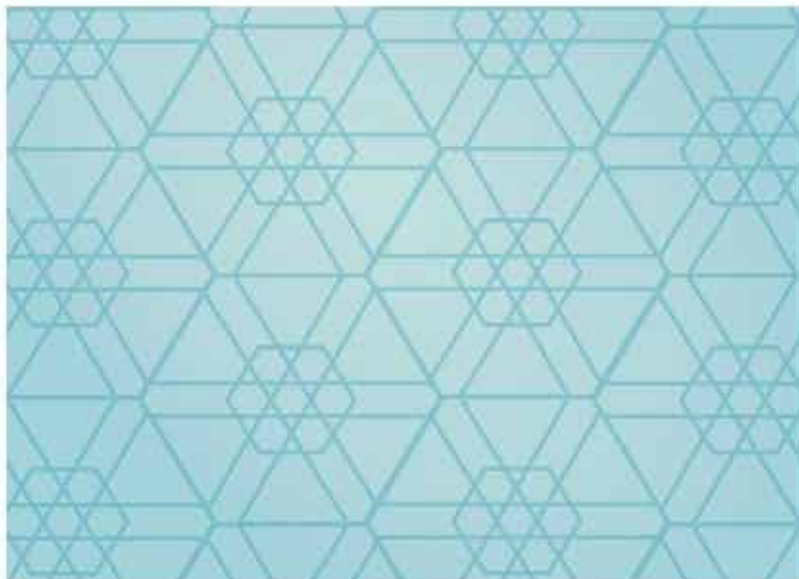
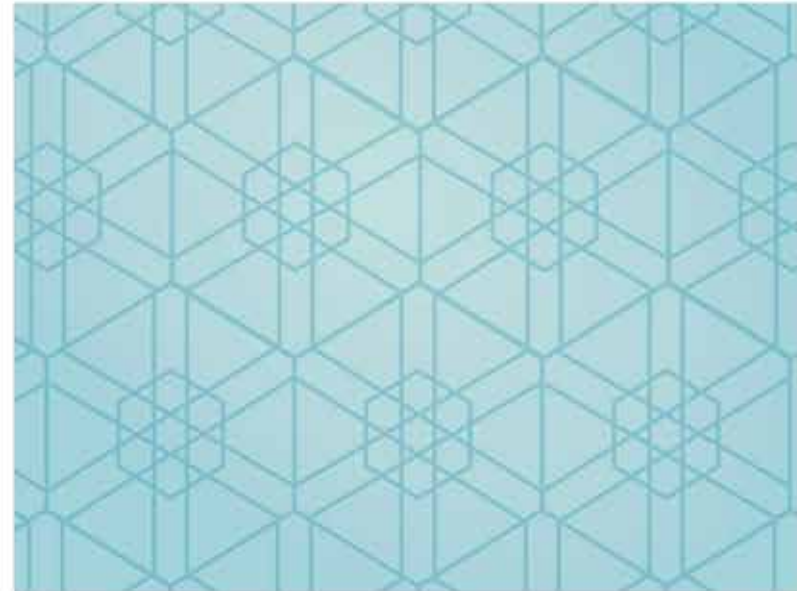


Store - Shahaniyah
Al Bader Group

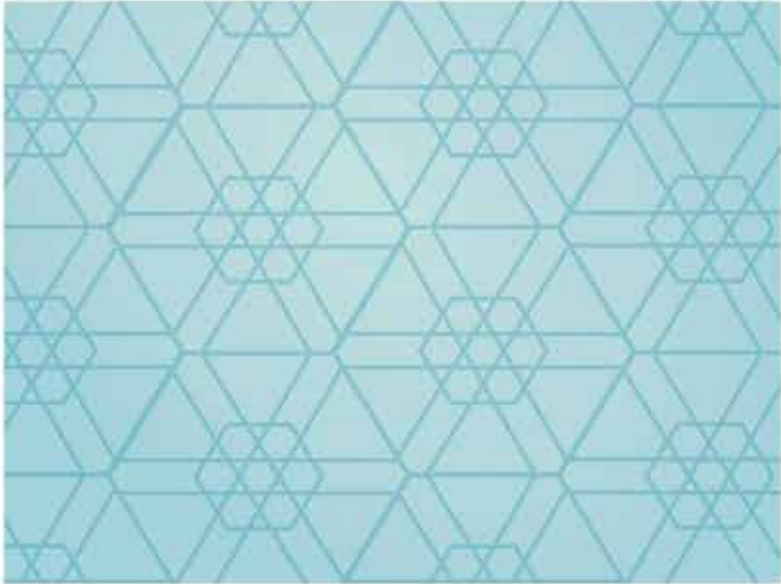


Store - Shahaniyah
Al Bader Group





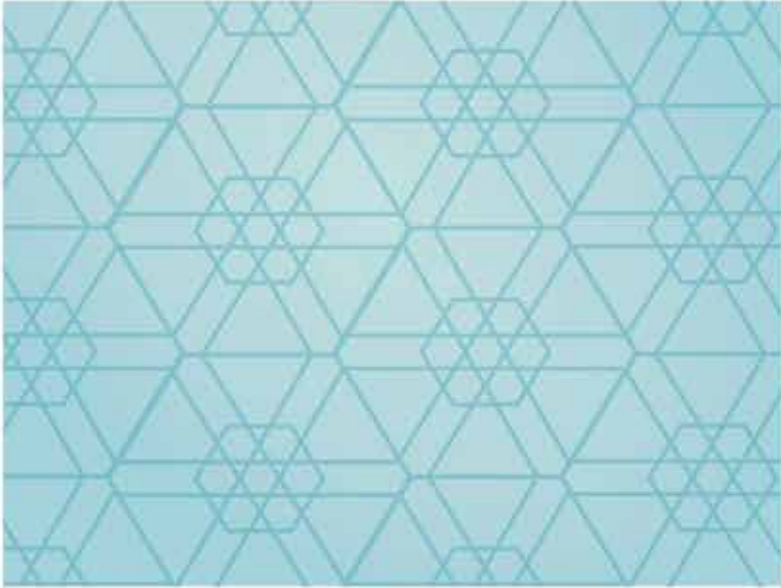
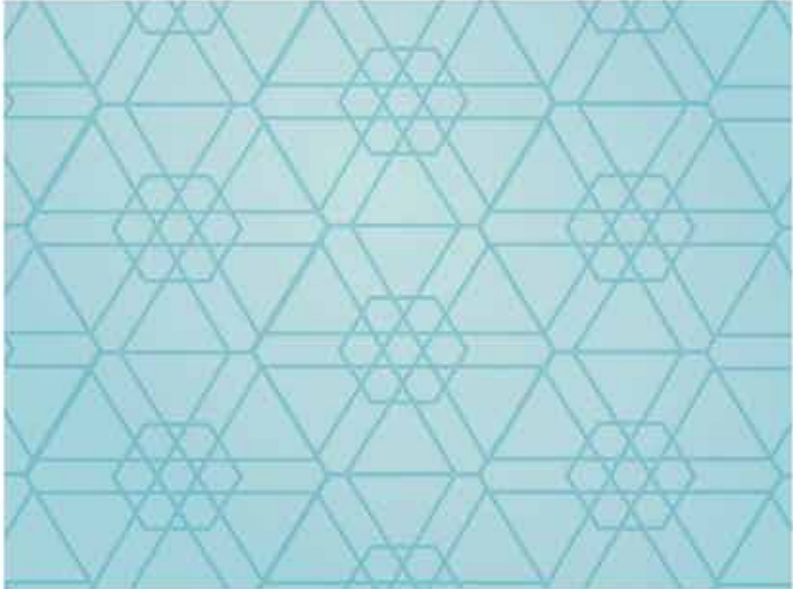
SHAHANIYAH ALUMINUM FACTORY



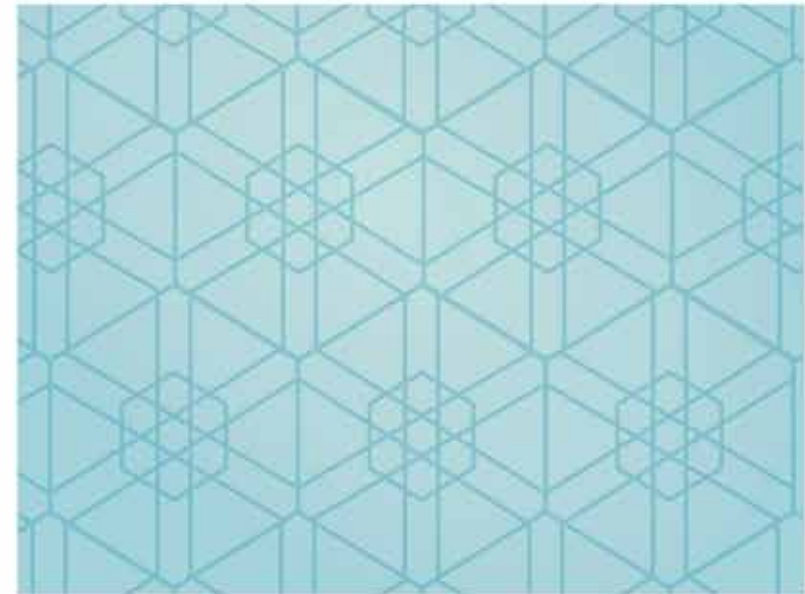
Shahaniya Aluminum
Factory



Shahaniya Aluminum
Factory



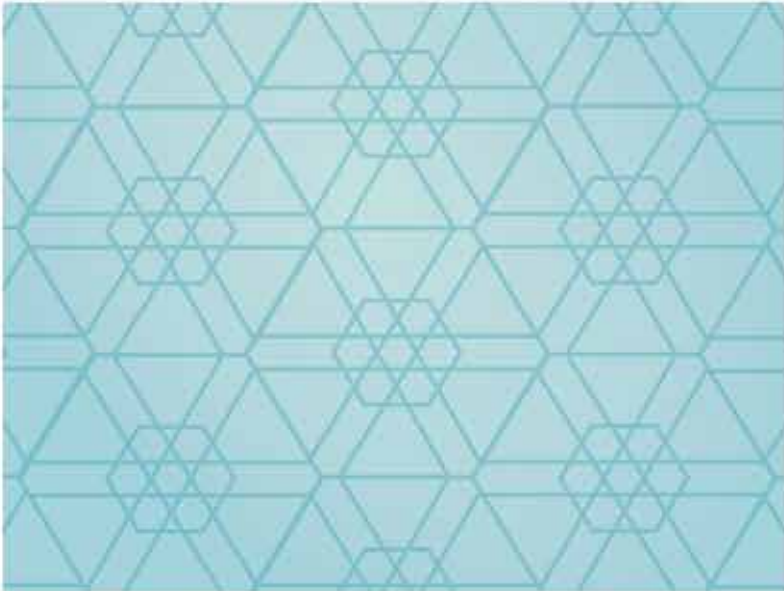
Shahaniya Aluminum
Factory



Shahaniya Aluminum
Factory



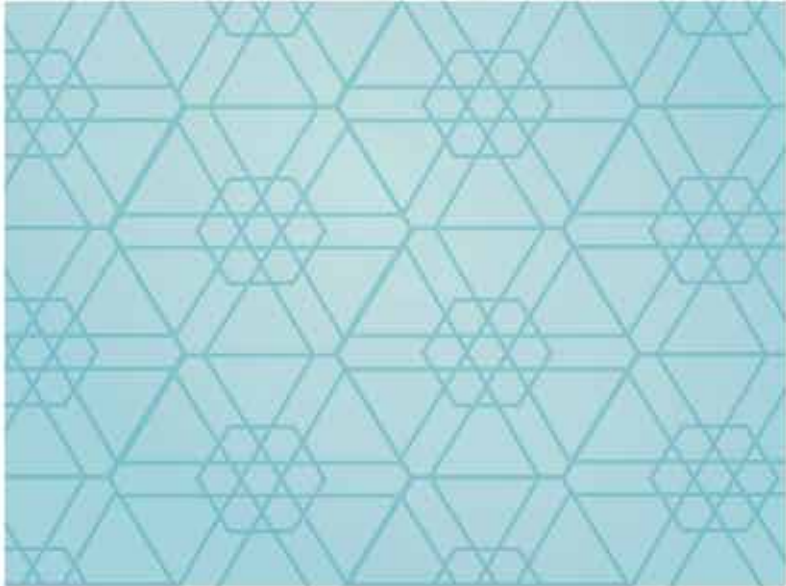
SHAHANIYAH ALUMINUM FACTORY



Shahaniya Aluminum Factory



Shahaniya Aluminum Factory

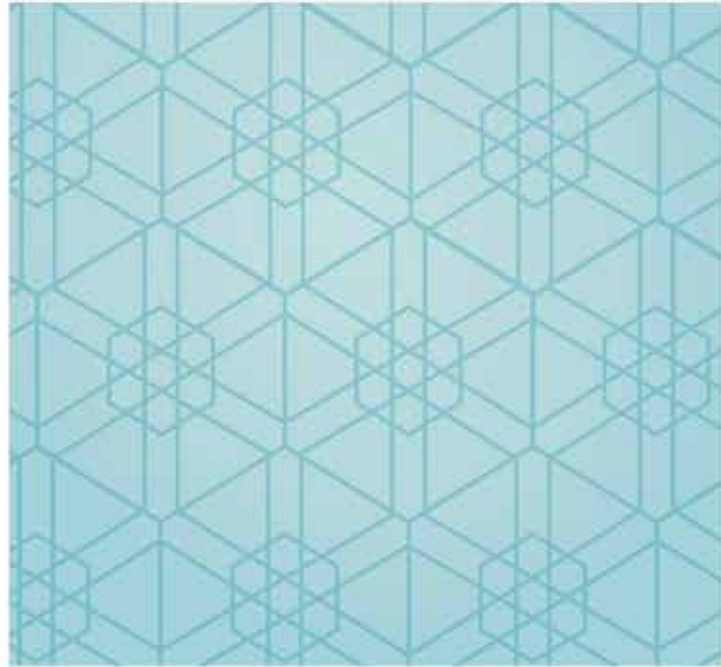




AL BADER
GROUP CO. W.L.L.

AL EZZ CHINA
AL EZ SPAIN

OUR COMPANIES



Al Ezz - China



Al Ezz - China



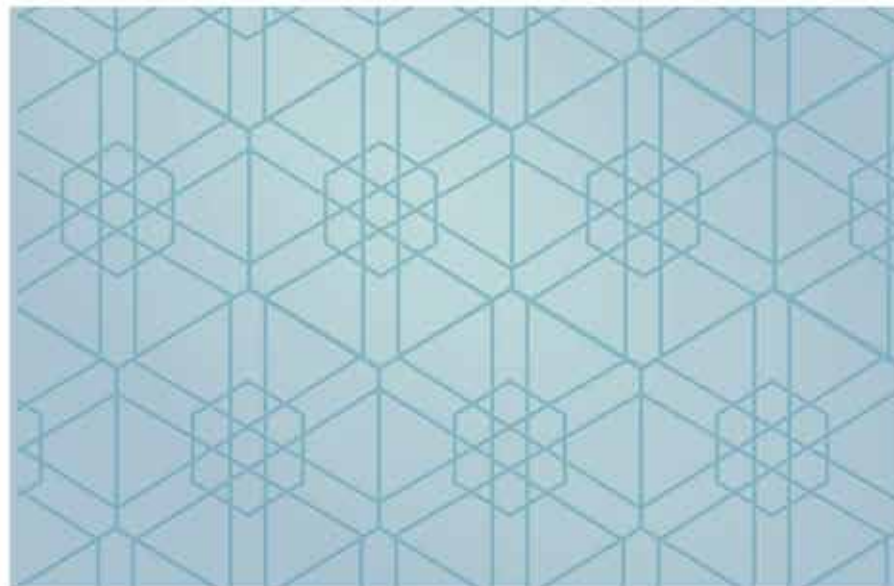
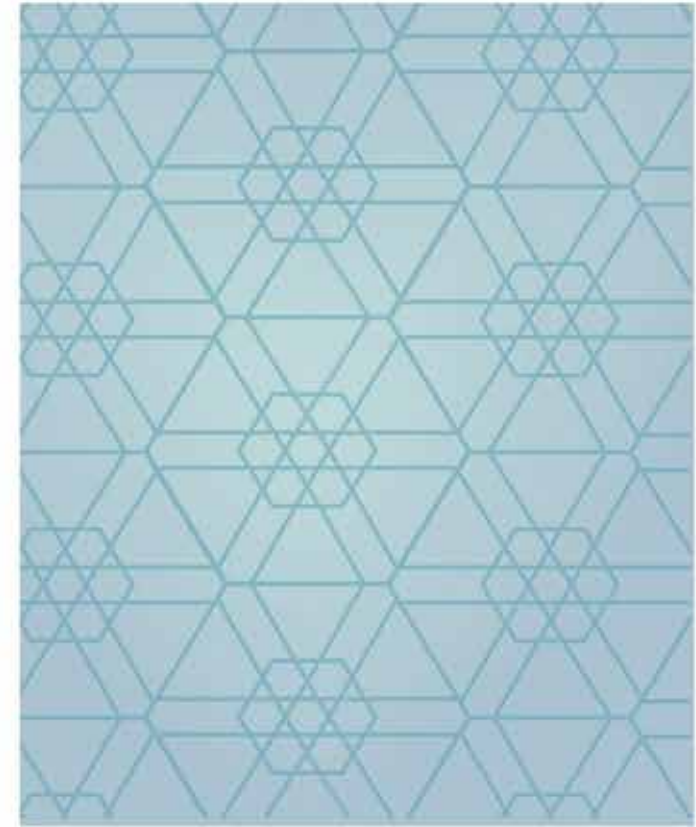






OUR COMPANIES





OUR COMPANIES



Al Ez Spain



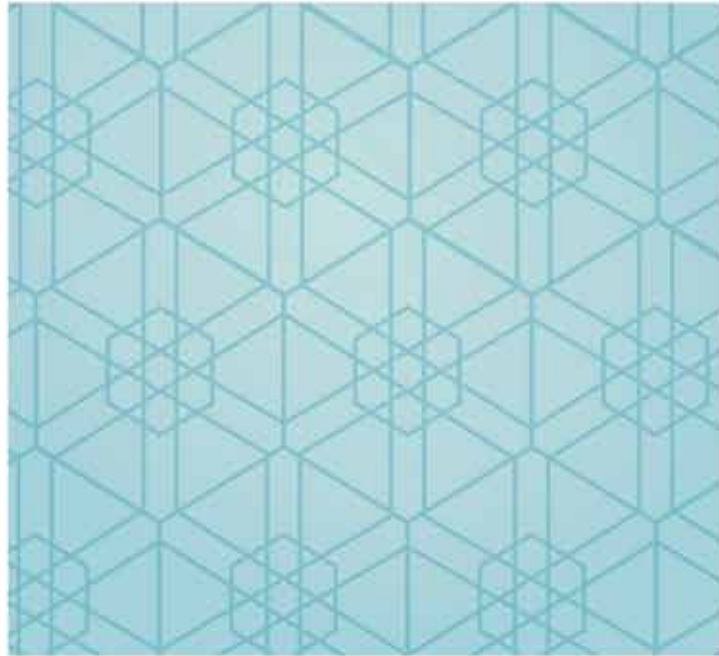
Al Ez Spain



Al Ez Spain



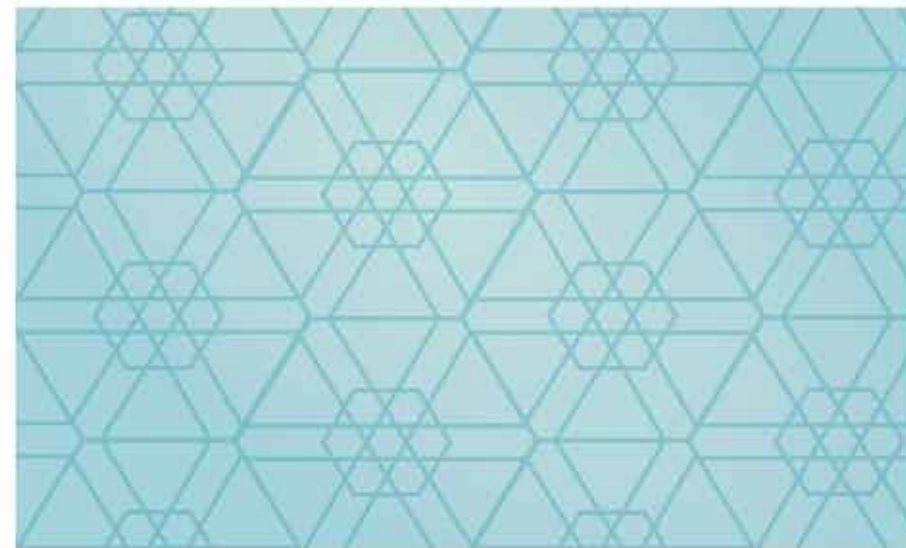
OUR COMPANIES



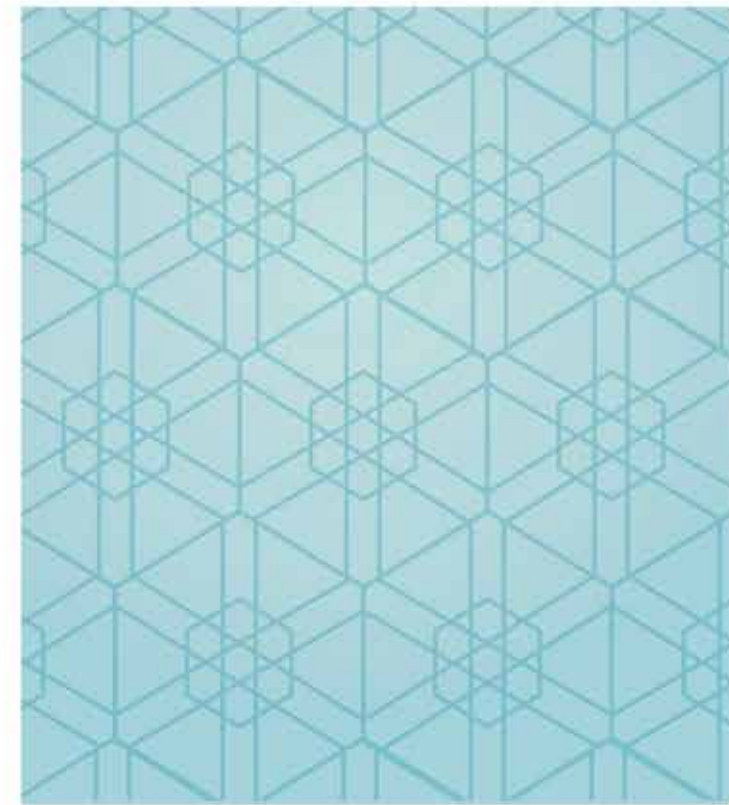
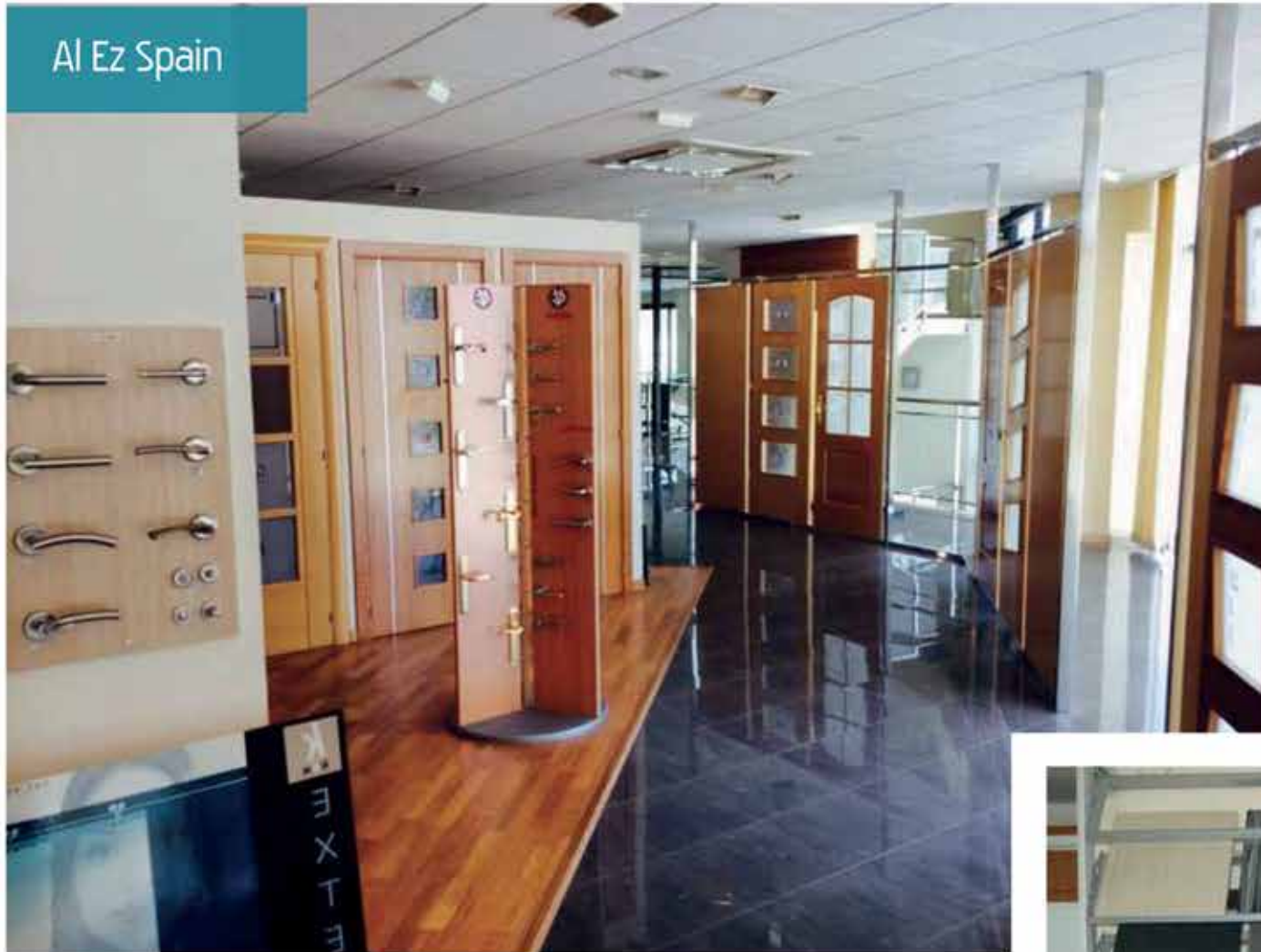
Al Ez Spain



Al Ez Spain



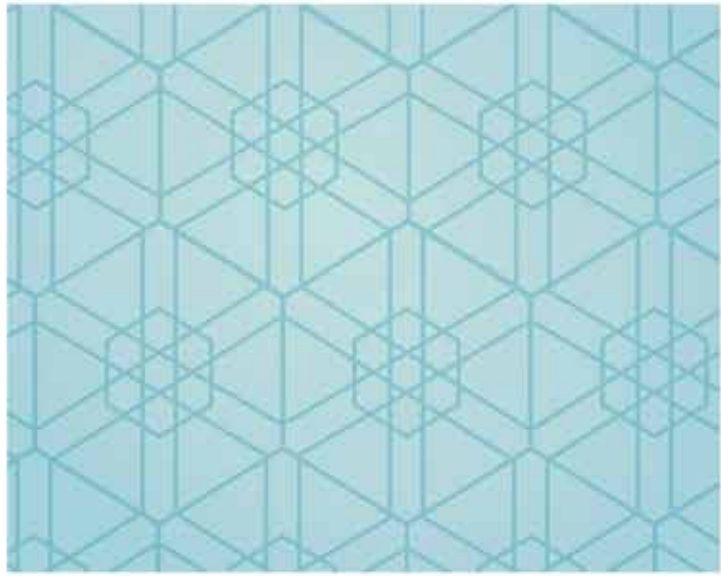
Al Ez Spain



Al Ez Spain



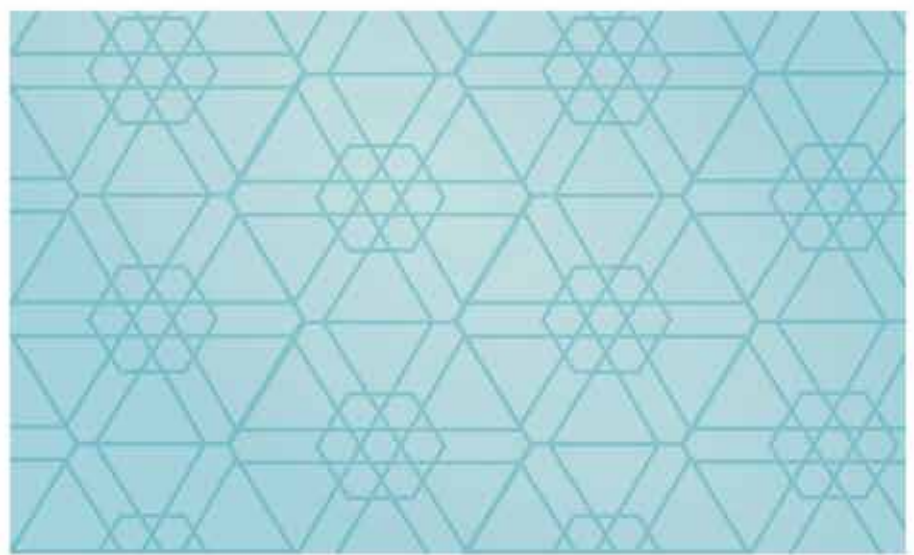
OUR COMPANIES



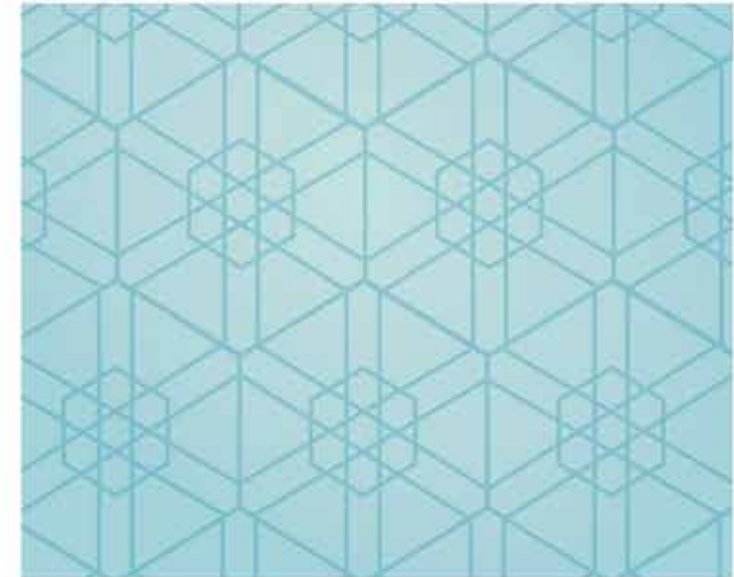
Al Ez Spain



Al Ez Spain

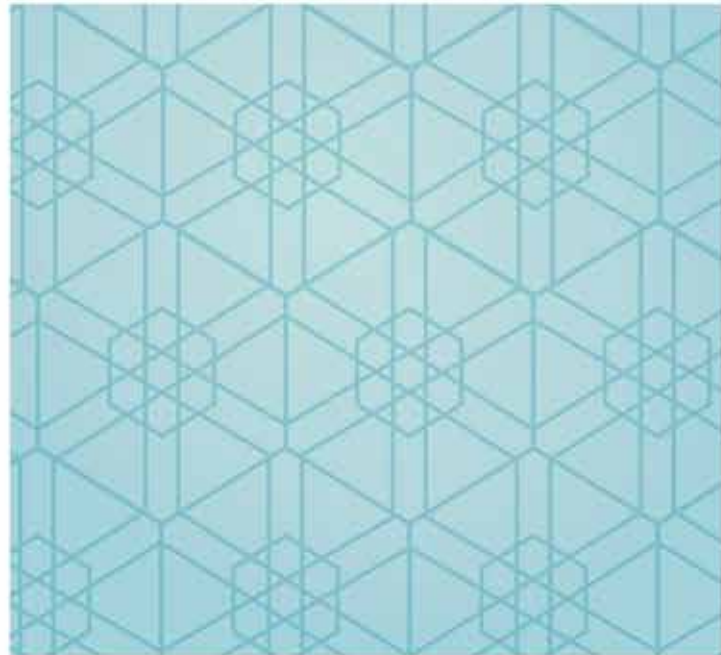


Al Ez Spain



Al Ez Spain

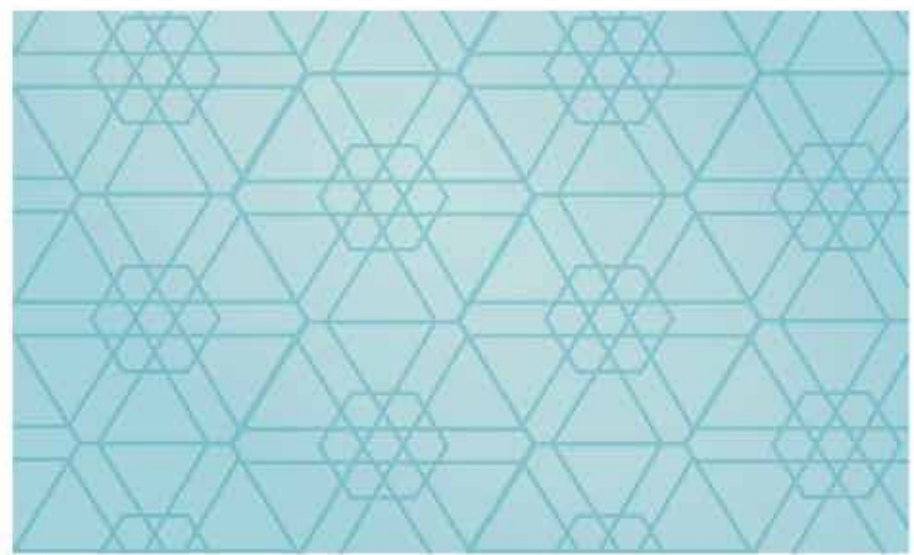
OUR COMPANIES



Al Ez Spain



Al Ez Spain





AL BADER
GROUP CO. W.L.L.

COMPANY
CERTIFICATIONS

Eng. Moetaz Moharam
Chairman of the Board of Directors

٧١١١١ ٧١١١١ • Certificado • Certificat • Zertifikat • Zertifikat • ٧١١١١ ٧١١١١
 ٧١١١١ ٧١١١١ • ٧١١١١ ٧١١١١ • ٧١١١١ ٧١١١١ • ٧١١١١ ٧١١١١



CERTIFICATE OF REGISTRATION
Quality Management Systems

AL BADER GROUP

Al Gharrafa, P.O. Box 18246, Doha, Qatar

Equalitas Certifications Limited Certifies that the Management System of the above mentioned Company has been assessed and meets the requirements established by the following rules:

ISO 9001:2008

The Management System Includes :

Providing General Construction and Civil Engineering Services

Certificate No: Q-05131223

Issue Date: 23 Dec 2013

2nd Surv. Due Before: 09 Dec 2015*

* After successful completion of surveillance audit, new certificate shall be issued.

Original Issue Date: 23 Dec 2013

1st Surv. Due Before: 09 Dec 2014*

Valid Till: 22 Dec 2016

In the course of validity of the present certificate the enterprise management system must permanently satisfy the requirements of the international regulations. The fulfilment of these regulations will be regularly controlled by Equalitas Certifications Limited.



(Signature)
Director



Equalitas Certifications Limited

URL: www.fresol.com

Accreditation by Joint Accreditation System of Australia and New Zealand (Accreditation No. M441021011)

Date: 29/9/2014

Time: 3:04 PM



2014 / 0007714 / 9

Subcontractor Approval

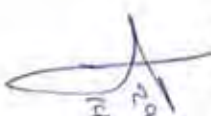
اعتماد مقاول

اسم المرخص له : مجموعة شركات البير للتجارة والمقاولات ذ.م.م	
Name of Licensed Party : ALBADER GROUP TRADING & CONTRACTING L.L.C	
Date Issue :	تاريخ الاصدار : 29/9/2014
رقم الرخصة : 1072	License Number:
Expiration Date :	تاريخ الانتهاء : 28/9/2015
سجل تجاري : 21363	Comm. Regist. No :
مجل مقبول	Contr . Regist. No
فكس : 44121791	Fax :
هاتف : 44863719	Phone :
ص . ب . 18246	P O. Box ; Doha

١- تخول الشركة / المؤسسة المنكورة اعلا بمرأولة اصيل مقبول انشاءات / بنية تحتية ضمن حدود دولة قطر ملائمت هذه الرخصة سارية .

٢- لا يحق باى شكل من الاشكال للشركة / المؤسسة حاملة هذه الرخصة بيعها او التنازل عنها او السماح لاي طرف ثالث باستعمالها لاشغال قطر الحق في ظل النظم واللوائح التنفيذية المعمول بها اتخاذ التدابير والاجراءات اللازمة والمناسبة تجاة أية مخالقات من هذا النوع استنادا لتوصيات اللجنة المختصة بهذا الشأن .

والله الموفق ،،،



رئيس لجنة الاعتلاء ،،
ع.ق
م . حمد خليفة العمادي



قطر تستحق الأفضل
Qatar Deserves The Best

Contractor's Classification Certificate



شهادة تصنيف ف م ق اول

سجل تجاري رقم: 27745
تجديد أول مرة

تشهد لجنة المناقصات المركزية بان السادة: مجموعة شركات البدر
قد تم تصنيفهم في التخصصات و بالفئات التالية:

التخصص	الفئة	الحدود المالية
مباني	الاولى	اكثر من 60 مليون ريال الي 150 مليون ريال
صيانة	الاولى	اكثر من 10 مليون ريال الي 30 مليون ريال

ملاحظة: يتم تقديم الملف للجنة قبل انتهاء التجديد الاخير للشهادة ب ٦٠ يوما و يحق للجنة تصنيف المقاولين طلب بيانات حديثة خلال هذه الفترة

رئيس لجنة تصنيف المقاولين




التاريخ: ٢٠١٤/١٠/٠١
صالحه حتى: ٢٠١٥/٠١/٠١



Halspan Limited
 Mairhouses, Bress, Edinburgh EH15 9SS UK
 Tel +44 (0) 1506 821538 Fax +44 (0) 1506 828996
 E-mail: doors@halspan.com www.halspan.com

Cadrete a 26 de Septiembre de 2013.

Bajo autorización expresa de Halspan Limited confirmamos que la empresa Aplicaciones Bosti S.L.U. está homologada para aplicar y construir puertas resistentes al fuego según el sistema Halspan Limited y, siguiendo las instrucciones y manuales de fabricación, queda amparados lo fabricados por lo certificados expedidos por Halspan.

Atentamente

Cadrete, September 26th 2013,

Under authorization of Halspan Limited confirmed that the company Applications Bosti SLU is certified to implement and build fire resistant doors according to the system Halspan Limited and, following the manufacturer's instructions and manuals, is covered made it so certificates issued by Halspan.

Yours faithfully

Miguel Marqués
Gerente
Maderas Unidas, S.A

CARRETERA DE VALENCIA, KM. 11,000 - 50420 CADRETE (Zaragoza) - informacion@maderasunidas.com
 MAZARUECA, TRAMO 208, GORRAL, 122, DE LA BICOC, 3º, URBIO SOCIEDADES, FOLIO 18 Y 24, HOJA 362, 25471 - C.L.F. A803378





Halspan Limited

Muirhouses, Bo'ness, Edinburgh EH51 9SS UK
Tel: +44 (0)1506 827538 Fax: +44 (0)1506 825996
Email: doors@halspan.com www.halspan.com

26/09/2013

To Whom It May Concern

Halspan Distribution

We hereby confirm that Maderas Unidas, S.A. are an authorised distributor of Halspan products. As such Maderas Unidas, S.A. are authorised to sell and invoice the Halspan® product range to cater to the market requirements.

Yours faithfully

John Martin
Director
For and on Behalf of
Halspan Ltd

E-mail: doors@halspan.com
Registered Office: Muirhouses, Bo'ness, Edinburgh, EH51 9SS Company Registration No: SC194458



IFGC certification

FI E RESISTANT TIMBER FIRE DOORS

Certificate number: FRTD528

This is a product certificate to certify that

ALBDER GROUP CO , W.L.L.

18246 PO BOX

DOHA

QATAR

TELEPHONE : +974 48637719

Who fabricate the following fire doors:

- Halspan FD30 Halspan FD60
- Halspan FD90 Halspan FD120

have satisfied the requirements of the above scheme. This includes the testing of products to **BS476: Part 22**, the inspection of Factory Production Control and continuing surveillance audits and testing of samples of products taken from production. The product specification and field of application to achieve from **30 minutes to 90 minutes Integrity** are detailed in the schedules referenced below.

Schedule ref: HS01, HS02, HS05, HS06



First Issued: 17 January 2011
Revised: 13 June 2013
Valid to: 16 January 2016
Issue No: 2



175

Bob Williams
Director of Certification

Peter Jackman
Technical Director

IFGC Certification Ltd, 20 Park Street, Princes Risborough, Buckinghamshire, UK, HP27 9AH
Tel: +44 (0)1844 275500 Fax: +4(0)1844 234002 E-mail: info@certification.ltd Web: www.certification.ltd
Registered No: 477898 England

The certificate and schedule are held in force by regular annual surveillance visits by IFGC Certification and the holder or user should contact IFGC Certification to verify its status. This certificate remains the property of IFGC Certification and must be returned to them on demand.

572 ©IFGC Certification Ltd 2004



**FIRE RESISTANT STEEL
FIRE DOORS**

Certificate number: IFCC 1020

This is a product certificate to certify that

ALBADER GROUP CO ,W.L.L

PO BOX 18246

DOHA ,QATAR

TELEPHON NO + 974 4863719+

Who fabricate the following fire doors:

Single Action, Double Leaf Steel Doorset FD120

have satisfied the requirements of the above scheme. This includes the testing of products to **BS476: Part 22**, the inspection of their Factory Production Control and continuing surveillance audits and testing of samples of products taken from production. The product specification and field of application to achieve **120 minutes integrity** are detailed in the schedule referenced below.



Schedule ref: IFCC 1020/S01

First Issued: 23 May 2013

Revised: 6 June 2013

Valid to: 22 May 2018

Issue No: 2

175



B. Williams

Bob Williams
Director of Certification

P. E. Jackson

Peter Jackson
Technical Director

IFC Certification Ltd, 20 Park Street, Inveres (E6200027), Buckinghamshire, UK, HP27 9AJ
Tel: +44 (0)1844 275500 Fax: +44 (0)1844 274602 E-mail: info@icfcertification.com Web: www.icfcertification.com
Registered No: 4777898 England

The certificate and schedule are held in force by regular annual surveillance visits by IFC Certification and the residue or vice should contact IFC Certification to validate its status. This certificate remains the property of IFC Certification and must be returned to them on demand.

IF27 ©IFC Certification Ltd 2004



بِسْمِ اللَّهِ الرَّحْمَنِ الرَّحِيمِ

التاريخ : 18-OCT-13

رقم الطلب : PS-102978-PA



وزارة الصناعة

الوزارة

إدارة الرقابة

TECHNICAL REPORT

التقرير الفني لصحة الوثائق والمعلومات

PRODUCT :	FIRE DOOR & ASSEMBLY	النوع :
APPLICATION :	PASSIVE FIRE PROTECTION	غرض الاستخدام :
APPLICANT / P.O BOX :	ALBADER GROUP CONTRACTING CO. W.L.L / 18246	مقدم الطلب / صندوق البريد :
MANUFACTURER / LOCATION :	ALBADER GROUP - BAALBAK CO FOR STEEL / QATAR YUJCAN/INDUSTRISS L.L.C	المصنع / الموقع :

PRODUCT / MODEL :	THREE-SIDED STEEL FRAME WITH TRANSSOM BARS (SINGLE SWING, STANDRAD PANS), THREE-SIDED FRAMES WITH TRANSSOM PANEETS (SINGLE SWING, STANDRAD PANS)- DOOR FRAMES FOR USE AS A COMPONENT IN THE DOOR ASSEMBLIES THAT MEET THE REQUIREMENTS OF UL 10B NEUTRAL PRESSURE THREE-SIDED STEEL FRAME WITHOUT TRANSSOM BARS (SINGLE SWING, STANDRAD PANS) BATTED UP TO AND INCLUDING 3 HRS. DOOR FRAMES FOR USE AS COMPONENT IN THE DOOR ASSEMBLIES THAT MEET REQUIREMENTS OF UL 10C (NEGATIVE PRESSURE) AND UL 10B (NEUTRAL PRESSURE) AS INDICATED IN UL NUL QVTV # 26157	نموذج المنتج :
3 RD PARTY CERTIFICATY APPROVAL :	UL CERTIFICATIONS	ملاحظات الجهات المعتمدة من جهات معتمدة :

RECOMMENDATIONS
 THE QUALITY CONTROL SYSTEM OF THE MANUFACTURER AND THE TESTING LABORATORY TO VERIFY THE COMPLIANCE OF THE PRODUCT WITH THE REQUIREMENTS OF THE STANDARD IS NOT SUFFICIENT. THE APPROVAL OF THIS PRODUCT IS CONDITIONAL ON THE MANUFACTURER'S AND THE TESTING LABORATORY'S AGREEMENT TO THE FOLLOWING RECOMMENDATIONS. THE PRODUCT SHALL BE AT THE POINT OF THE CERTIFICATING BODY'S BUREAU OF LABORATORY AND SHALL BE SUBJECT TO THE FOLLOWING RECOMMENDATIONS. THE PRODUCT SHALL BE SUBJECT TO THE FOLLOWING RECOMMENDATIONS.
 MANUFACTURER NAME / LOGO & UL MARK

ENGINEER:  OFFICER: 


بسم الله الرحمن الرحيم

وزارة الداخلية
الإدارة العامة للدفاع المدني
إدارة الوقاية

التاريخ: 02 -OCT-13
رقم الطلب: PW-102345-PA

التقرير الفني لمعدات الإطفاء والسلامة

TECHNICAL REPORT	
PRODUCT :	FIRE DOOR WOOD & ASSEMBLY
PRODUCT APPLICATION :	PASSIVE FIRE PROTECTION
APPLICANT / P.O BOX :	ALBADER GROUP CONTRACTING CO .W.L.L / 18246
MANUFACTURER / LOCATION :	CHILTERN INERNATIONL FIRE
PRODUCT /MODEL :	1 HRS FIRE RESISTING DOOR SETS SINGLE AND DOUBLE ,FIREGLAZE 60 , THERM-A-GLAZE 60 , GLASS TYPE : PYROSHIELD 2 REPORT NO : FEA/F96103 VALID FROM : 23 NOVEMBER 2012 VALID UNTIL : 10 MAY 2017 باب خشب مصنع بإسبانيا مقاوم للحريق ٣٠ دقيقة الى ٩٠ دقيقة حسب المواصفات القياسية المرفقة.
3RD PARTY CERTIFICATY / APPROVAL :	HALSPAN + IFC
RECOMMENDATIONS	التوصيات THE QCCO HAS REVIEWED THE SUBMITTED THE MANUFACTURER'S PRODUCT AND FINDS NO DEFICIENCY TO MANUFACTURING AND USE OF THE FIRE SAFETY PRODUCT / EQUIPMENT STATED HERE IN AS VERIFIED FROM THE 3 RD PARTY TESTING AUTHORITY . THE APPROVAL OF THIS PRODUCT IS ONLY VALID UPON INSTALLATION BY PERSONS CERTIFIED BY THE MANUFACTURER . THE PRODUCT SHALL BEAR THE MARK OF THE CERTIFYING BODY AND SHALL BE VERIFIED BY THE ENGINEER PRIOR TO INSTALLATION . THIS PRODUCT APPROVAL IS VALID UP TO TWO (2) YEAR FROM DATE OF ISSUE . MANUFACTURER NAME / LOGO & HALSPAN AND IFC MARK
ENGINEER	OFFICER
<i>En. R. M. ...</i>	<i>...</i>

شهادات الحورات المسجلة من جهات معتمدة:

Certificates of compliance

CERTIFICAT NO : GSYX.R26158

SWINGING – TYPE FIR STEEL DOOR



**Underwriters
Laboratories**
Qualified SFRM
Contractor Program

General information for swinging – type fire steel door for :-

ALBADER GROUP CO. W.L.L / DOHA, QATAR
BALBAK FOR STEEL DOOR / DOHA, QATAR
VULCAN INDUSTRIES L.L.S / AJMAN, UAE

STEEL DOOR PROVIDED AS FOLLOWS:

MAX RATING	OPENING TYPE	HOLLOW/METAL TYPE DOOR	STEEL COVERED COMPOSITE TYPE DOOR
2 HR	SINGLE OR PAIR WITH ASTRAGLE	*	-
	SINGLE POINT LOCK / RULICH BOLTS		
2 HR	SINGLE RIM/MORTISE FIRE EXIT HARDWARE	*	-
2 HR	PAIR WITH ASTRAGLE	*	-
	VERTICAL ROD/VERTICAL ROD FIRE		
3 HR	SINGLE OR PAIR WITH ASTRAGLE	*	-

THIS IS TO CERTIFY THAT : STEEL DOOR MATERIAL
HAVE BEEN INVESTGATED BY UNDERWRITERS LABORATORIES (INCL. (UL) OR ANY
AUTHORIZED LICENSEE OF UL IN ACCORDANCE WITH THE STANDARD (S)
INDICATED IN THIS CERTIFICATE

ADDITIONAL INFORMATION: SEE UL ON-LINE WWW.UL.COM

LOOK FOR THE UL LISTING MARK ON THE PRODUCT



WILLIAM R. CORNELL

DIRECTOR, NORTH AMERICAN CERTIFICATION PROGRAMS



State of Qatar
Ministry of Economy & Commerce
Registration and Commercial Licenses Department



دولة قطر
وزارة الاقتصاد والتجارة
إدارة التسجيل والترخيص التجارية

مستخرج ببعض بيانات السجل

التاريخ: 2014/02/24 صفحة رقم: 1 من 2

رقم السجل التجاري	27745
اسم التجاري	مجموعة شركات البدر
نوع المنشأة	ذ م م
جنسية الشركة	قطر
المسمة	
نوع السجل	سجل تجاري
العنوان	صوب:
رأس المال	20000000
رقم السجل التجاري	27745
اسم التجاري	مجموعة شركات البدر
نوع المنشأة	ذ م م
جنسية الشركة	قطر
المسمة	
نوع السجل	سجل تجاري
العنوان	صوب:
رأس المال	20000000

الشركاء

اشخاص طبيعون

النسبة	تاريخ الميلاد	الجنسية	الاسم
49.00	1977	قطر	الشيخ فيصل جاسم ثاني آل ثاني
2.00	1967/01/01	قطر	محمد خلف سلطان البدر
49.00	1965/01/01	مصر	معتز محمد منصور

المختلون بالتوقيع

تاريخ الميلاد	الجنسية	المهنة	الاسم
1965/01/01	مصر	---	معتز محمد منصور
1977	قطر	---	الشيخ فيصل جاسم ثاني آل ثاني
1988	مصر	مدير	رامي معتز محمد محرم



www.mec.gov.qa

State of Qatar
Ministry of Economy & Commerce
Registration and Commercial Licenses Department



دولة قطر
وزارة الاقتصاد والتجارة
إدارة التسجيل والتراخيص التجارية

رقم سجل التجار: 27745 التاريخ: 2014/02/24 مطبوع رقم: 2 من 2

الأنشطة التجارية

اسم النشاط	رقم النشاط	اسم الفرع
مطويات رسمت و تجهيد المطري	2	مطويات قماش القطن (مثل ميني ستايف ستايف، ساسوا، صمغ، قطن، ...)
مطويات القطن والفلان	4	مطويات مطر الاطلاق
اصول صيد السمك	6	التجارة في قطع خبز السمكيات و تجهيد التبريد
مطويات قماش الجوز والفري	8	تصدير و استيراد المطرات
تجارة الاوتات الصمغ	10	التجارة في الاوتات القويدييه
اصول السمكه (باب قير) تجهيد القويدييه والمجوي	11	

الفرع

حالة الفرع	الرقم التسلسلي	اسم الفرع
1		البر للخدمات والاستيراد والتصدير والمطويات
2	2014/2/23	تصدير سمكيات حقول القطن والفري
3	2014/2/23	البر للخدمات والتصدير
4		البر للتقنين السمكيات و التجارة
5		البر الوظيفية
6		شركة يملكه للخدمات

تجهيد وزارة الاصول و التجارة و البر للخدمات الواردة اعلان مطوية تجهيد السمك التجري، وقد اصلي له هذا المستخرج بنانه على طلبه.

ملاحظة مطية: لكل من اي صوره فوتوغرافية لوجه الشهادة ما لم تكن مصفحة من وزارة الاصول و التجارة - تجارة السمك التجريه



www.mec.gov.qa



State of Qatar
Ministry of Economy & Commerce
Registration and Commercial Licenses Department

دولة قطر
وزارة الاقتصاد والتجارة
إدارة التسجيل والتراخيص التجارية

مستخرج ببعض بيانات السجل

تاريخ: 2014/02/26 صيغة رقم: 1 من 1

رقم السجل التجاري	27745/1
الاسم التجاري	البحر للخدمات والاستيراد والتصدير والمطاولات
تاريخ المنشأة	2005/01/10
تاريخ إنشاء الفرع:	2015/04/28
نوع المنشأة	ذ م م
جنسية الشركة	قطر
الاسم	
رقم سجل المظهر الرئيسي	27745
الاسم التجاري للمظهر الرئيسي	مجموعة شركات البحر
نوع السجل	سجل تجاري
العنوان	ص.ب: 200000
رأس المال	

المكون بالتوقيع	الاسم	الصلة	الجنسية	تاريخ الميلاد
معتز محمد حسين محرم	---	---	مصر	1965
الشيخ فؤصل جاسم ثاني آل ثاني	مدير	مدير	قطر	1977
رامي معتز محمد محرم	مدير	مدير	مصر	1988

الأشطة التجارية	اسم النشاط
1 (S12000) التجارة في المواد الغذائية	2 (S21600) التجارة في الملابس الجاهزة
3 (701200) تلوجير و استئجار المطارات	4 (S60500) التجارة في قطع غيار المكيفات و اجزائه التبريد
	5 (S38100) التجارة في حملات السباحة مستلزماتها

تشهد وزارة الأعمال و التجارة بان البيانات الواردة أعلاه مطابقة لبيانات السجل التجاري. وقد أعطى له هذا المستخرج بناءً على طلبه.
ملاحظة هامة:
لتكامل أي صورة فوخرافية لهذه الشهادة ما تم تكن مصفقة من وزارة الأعمال و التجارة - إدارة الشؤون التجارية.



www.mec.gov.qa

State of Qatar
Ministry of Economy & Commerce
Registration and Commercial Licenses Department



دولة قطر
وزارة الاقتصاد والتجارة
إدارة التسجيل والتراخيص التجارية

مستخرج ببعض بيانات السجل

التاريخ: 2014/04/29 ساعة رقم: 1 من 1

رقم السجل التجاري	45836/2	رقم السجل التجاري	2011/06/20	تاريخ انتهاء السجل:	2015/05/12
اسم التجارى	شركة نوس ابر	اسم التجارى	قطر	نوع النشاط	تاريخ انتهاء السجل: 2015/05/12
نوع النشاط	ت.م.م	نوع النشاط	قطر	جسمية التبركة	رقم سجل السجل الرئيسي
جسمية التبركة	قطر	جسمية التبركة	45836	الاسم التجارى للسكر الرئيسي	رقم الهاتف: 44882788
التسمية	شركة موجبة التمسر والمضار للتجارات	التسمية	22210	نوع السجل	ص.ب.ب : 0
رقم سجل السجل الرئيسي	0	نوع السجل	رأس المال	رقم السجل	0

المعلومات بالتوقيع

تاريخ التوقيع	الهيئة	الاسم	الموقع
1961	مدير	مدير	التوقيع باسم شخص جاسم آل ثني
1977	مدير	مدير	التوقيع قبيل جاسم ثني جاسم آل ثني

الأشطة التجارية

اسم النشاط	رقم النشاط	نوع النشاط
صناعة وحدات التكييف	2001093	2
صناعة أجهزة تكييف الهواء المنفصلة	2001118	3
تدبير وزارة الاصلح والتجارة	2004047	1

تتبعه وزارة الاصلح والتجارة بان الهيئات الواردة اعلاه مطابقة لبيانات السجل التجاري، وقد اعطى له هذا المستخرج بنفاذ على طلبه.
ملاحظة هامة:
يحتل أي صورة قديمة لهذا لبيحة الشهادة ما لم تكن مصدقة من وزارة الاصلح والتجارة - إدارة التوثيق التجارية.



www.mec.gov.qa

State of Qatar
Ministry of Economy & Commerce
Registration and Commercial Licenses Department



دولة قطر
وزارة الاقتصاد والتجارة
إدارة التسجيل والتراخيص التجارية

مستخرج ببعض بيانات السجل

التاريخ: 2014/07/23 صفحة رقم: 1 من 2

مقر فرعي	رقم السجل التجاري	27745/4
العن التعقيص المعملات و التجارة		
تاريخ انتهاء السجل: 2015/04/28	تاريخ انشاء الفرع: 2007/03/29	
نوع المنشأة		
ذ م م		
نوع السجل		
قطر		
المسبة		
رقم سجل المقر الرئيسي	27745	
نوع السجل		
مجموعة شركات البهر		
الطران	رقم الهاتف: 4421579	ص.ب: 18246
رأس المال	0	

المعلومات بالتوقيع	الاسم	الصفة	الجنسية	تاريخ الميلاد
معتز محمد محمد حسين محرم	مطير	مصر	1965	
الشيخ فيصل جلمش ثقي ال ثاني	مطير	قطر	1977	
رامي معتز محمد محرم	مطير	مصر	1988	

الأششطة التجارية	اسم النشاط
1 746110) تكميص المعملات (خدمات عمه)	2 التجارة في الحديد (541200)
3 537800) التجارة في الاسبنت	4 التجارة في الاموات الكهربيه
5 537000) تجارة مواد البناء	6 التجارة في الاجزاء الكهربيه



www.mec.gov.qa

State of Qatar
Ministry of Economy & Commerce
Registration and Commercial Licenses Department



دولة قطر
وزارة الاقتصاد والتجارة
إدارة التسجيل والتراخيص التجارية

رقم السجل التجاري: 27745/4 التاريخ: 2014/07/23 صفحة رقم: 2 من 2

8	تجارة السيارات (رخصة بائع) غير الربح أو الموزع المصنف (مثل معارض السيارات الجديدة)	501200	تجارة السيارات (رخصة بائع)	501200
10	التجارة في المواد الكيميائية الخطرة بأصل البنية	536171	التجارة في المواد الكيميائية الخطرة بأصل البنية	536171
12	التجارة في المواد الكيميائية الخطرة و التغليف (المخلفات)	531100	التجارة في المواد الكيميائية الخطرة و التغليف (المخلفات)	531100
14	تجارة طائرات السيارات	2001388	تجارة طائرات السيارات	2001388
15	اصول الوساطة العقارية	2004727	اصول الوساطة العقارية	2004727
7	تجارة السفنات والمخلفات والمطبات	2001660	تجارة السفنات والمخلفات والمطبات	2001660
9	التجارة في السمك الطرية	544121	التجارة في السمك الطرية	544121
11	التجارة في المواد الكيميائية الخطرة للمساكن وتصل المسكن	536270	التجارة في المواد الكيميائية الخطرة للمساكن وتصل المسكن	536270
13	التجارة في المواد المرورية	537710	التجارة في المواد المرورية	537710

تشهد وزارة الاقتصاد والتجارة والتراخيص التجارية، وقد أعطى له هذا المستخرج بناء على طلبه
ملاحظة خاصة:
يحتل أو صوزة الترخيص لهذه الشهادة ما لم تكن مستقلة عن وزارة الأمان والتجارة - إدارة الترخيص التجارية



قسم السجل التجاري
www.mec.gov.qa



State of Qatar
Ministry of Economy & Commerce
Registration and Commercial Licenses Department

دولة قطر
وزارة الاقتصاد والتجارة
إدارة التسجيل والتراخيص التجارية

مستخرج ببعض بيانات السجل

التاريخ: 2014/02/26 ملحة رقم: 1 من 1

مقر فرعي	رقم السجل التجاري	27745/5
2015/04/28 تاريخ انتهاء السجل:	النوع التجاري	النوع الهندسية
1965/01/23 تاريخ الميلاد	نوع المنشأة	ذ.م.م
1977	جنسية الشركة	قطر
1988	المسعة	27745
	رقم سجل المقر الرئيسي	مجموعة شركات البئر
	الاسم التجاري للمقر الرئيسي	ص.ب. : 18246
	نوع السجل	0
	العنوان	
	رأس المال	

المخولون بالتوقيع

تاريخ الميلاد	الجنسية	المهنة	الاسم
1965/01/23	مصر	مهندس	معز محمد محرم
1977	قطر	مهندس	الشيخ فيصل جاسم ثاني آل ثاني
1988	مصر	مهندس	راسي معز محمد محرم

الأنشطة التجارية

اسم النشاط	الرقم
التجارة في الأجهزة الكهربائية	1 (528090) التجارة في المعدات الخاصة بآلات الخياطة
التجارة في الملابس	3 (531100) التجارة في أجهزة التبريد والتدفئة (المكيفات)
تجهيزات قنادية	5 (531700) التجارة في اللائحات
	2 (531000) التجارة في الاجهزة الكهربائيه
	4 (531200) التجارة في الغسالات
	6 (591110) تجهيزات قنادية

تشهد وزارة الأعمال والتجارة بأن البيانات الواردة أعلاه مطابقة لبيانات السجل التجاري. وقد أحضر له هذا المستخرج بناءً على طلبه.

ملاحظة هامة:

لا تطلب أي صورة فوتوغرافية لهذه الشهادة ما لم تكن مصدقة من وزارة الأعمال والتجارة - إدارة الشؤون التجارية.



www.mec.gov.qa

State of Qatar
Ministry of Economy & Commerce
Registration and Commercial Licenses Department



دولة قطر
وزارة الاقتصاد والتجارة
إدارة التسجيل والترخيص التجارية

مستخرج بيضاء السجل

التاريخ: 2014/02/26 صفحة رقم: 1 من 1

رقم السجل التجاري	27745/6
الاسم التجاري	شركة بطق للخدمات
مقر لمعي	تاريخ انتهاء السجل: 2015/04/28
	تاريخ إنشاء الفرع: 2011/06/01
	ن ا م م
	قطر
	نوعية الشركة
	الصفة
	رقم سجل المظهر الرئيسي
	27745
	مجموعة شركات البهر
	الاسم التجاري للمقر الرئيسي
	نوع السجل
	الطرق
	رقم الهاتف: 44863719/44121791
	صوب : 18246
	0
	رأس المال

المخولون بالتوقيع

تاريخ الميلاد	الجنسية	المنطقة	الاسم
1965	مصر	مطير	معتز محمد حسن محرم
1977	قطر	مطير	الشيخ فيصل جاسم ثني آل ثني
1988	مصر	مطير	راسي معتز محمد محرم

الأنشطة التجارية

اسم النشاط	الترتيب	التجارة في الامتياز	التجارة في الامتياز
	2	(5411100) التجارة في الامتياز	1 (541200) التجارة في الحيد
	4	(2002344) ورش الاطعام (طرح العرصة)	3 (2001985) ورش الخدمات والحجم (المنطقة الصناعية خارج العرصة)

تتبعه وزارة الاصل و التجارة بان الهيئات الواردة اعلاه مطابقة لبيانات سجل التجاري. وقد اضفي له هذا المستخرج بيضاء على طلبه.

ملاحظة هامة:
لا تملك أي صورة قديمة البنية القديمة ما لم تكن مصنفة من وزارة الاصل و التجارة - اجراء الطورون التجارية.



www.mec.gov.qa



Informe Promocional

Empresa: AL EZ IMPORT EXPORT SOCIEDAD LIMITADA.

Denominación: AL EZ IMPORT EXPORT SOCIEDAD LIMITADA.

Domicilio Social: CALLE DE L'ESTANY (POL INDUSTRIAL RIU), 18 - NAV 89 - 43008 TARRAGONA (Tarragona)

Fecha: 26/02/2014

INFORMA D&B S.A
Av. de la Industria, 32
28108 Alcobendas (Madrid)
+34 902 10 11 32
www.einforma.com
clientes@einforma.com

Informe Promocional

AL EZ IMPORT EXPORT SOCIEDAD LIMITADA.

Página 1

www.einforma.com Toda la información económica, financiera y empresarial eInforma es una marca de INFORMA D&B, S.A., empresa líder en Información Comercial, Financiera y de Marketing. INFORMA D&B, S.A. es el proveedor de información de riesgo-crédito de más del 95% de las entidades bancarias de España. La base de datos de INFORMA D&B, S.A. posee más información financiera de empresas españolas que ninguna otra empresa de información. INFORMA D&B S.A. - Avda. Industria 32 - 28108 Alcobendas (Madrid) - Tlf: 902 10 11 32 Fax: 91 490 10 98



Resumen Ejecutivo

Datos Generales

DATOS DE IDENTIFICACION	
Situación de la Empresa	● Activa
CIF/NIF	B55595615
Número D-U-N-S	465253749
Denominación	AL EZ IMPORT EXPORT SOCIEDAD LIMITADA
Domicilio Social	CALLE DE L'ESTANY (POL INDUSTRIAL RIU), 18 - NAV 69 - 43006 TARRAGONA (Tarragona)
Domicilio Anterior	CALLE ILLES BALEARS (UR LA GRANJA), 3 - 43006 TARRAGONA (Tarragona)
ESTRUCTURA CORPORATIVA	
Administrador Único	MOHARAM MOETAZ MOHAMED MOHAMED, HUSSEIN
Matriz	HUSSEIN MOHARAM MOETAZ MOHAMED MOHAMED
Participaciones:	NO
ESTRUCTURA LEGAL	
Forma Jurídica	Sociedad limitada unipersonal
Capital Social	1.903.000 €
Coilza en Bolsa	NO
Último Acto BORME	06/05/2013 Cambio de domicilio social
INFORMACION COMERCIAL	
Fecha Constitución	12/03/2013
Actividad Informa	1488000 - Industria del mueble de madera
CNAE 2009	3109 Fabricación de otros muebles
SIC	2511 Muebles de madera
Objeto Social	Elaboración, fabricación, transformación, distribución, comercio al menor y al mayor, importación y exportación de toda clase de muebles, objetos y carpintería de madera en general. Diseño de interiores
Actividades Internacionales	Importa y Exporta
OTRA INFORMACION DE INTERÉS	
Fecha último dato	12/06/2013

Informa Promocional

AL EZ IMPORT EXPORT SOCIEDAD LIMITADA

Página 2

www.einforma.com

Toda la información económica, financiera y empresarial

informa es una marca de INFORMA D&B, S.A., empresa líder en información comercial, financiera y de marketing. INFORMA D&B, S.A. es el proveedor de información de mayor calidad de este país de: de las entidades asociadas de España. La base de datos de EMPRESAS D&B, S.A. cubre más información económica de empresas españolas.



Estructura corporativa

Vinculaciones administrativas

Resumen

* Otros cargos: 1 miembros (08/04/2013)

* Órgano de administración: 1 miembros (18/03/2013)

Administradores, Dirigentes y Auditor de Cuentas

Órgano de administración

Cargo vigente
Administrador Único

Apellidos y nombre
 MOHARAM MOETAZ MOHAMED MOHAMED, HUSSEIN

Fecha Nombramiento
 18/03/2013

2. Administradores en funciones

Los datos del presente informe se basan en la información que se ha proporcionado por el interesado y no se ha verificado su veracidad ni se ha realizado ninguna auditoría independiente.

Vinculaciones financieras

Accionistas

Razón Social	Aviso	NIF/País	%	Fuente	FECHA FUENTE
HUSSEIN MOHARAM MOETAZ MOHAMED MOHAMED			100,00 %	B.O.R.M.E.	02/04/2013

Accionistas : 1

Informe Promocional

AL EZ IMPORT EXPORT SOCIEDAD LIMITADA

Página 3

www.einforma.com

Toda la información económica, financiera y empresarial

einforma es una marca de INFORMA D&B, S.A., empresa líder en Información Comercial, Financiera y de Marketing. INFORMA D&B, S.A. es el proveedor de información de riesgo- crédito de más del 95% de las entidades bancarias de España. La base de datos de INFORMA D&B, S.A. posee más información financiera de empresas españolas que ninguna otra empresa de información. INFORMA D&B S.A. - Avda. Industria 32 - 28108 Alcobendas (Madrid) - Tel: 902 10 11 32. Fax: 91 480 10 98



Estructura legal

Datos de Constitución

- Fecha de registro: 12/03/2013
- Provincia del registro: Tarragona
- Nº de anuncio: 153398
- Datos registrales: Tomo 2733, Folio 205, Hoja 45164, Sección 8, Inscripción I/A 1, Fecha de inscripción 2013-03-19
- Forma jurídica: SOCIEDAD LIMITADA DE FORMACION SUCESIVA
- Capital social: 3.000

Datos de estructura Actual

- Forma jurídica: Sociedad limitada unipersonal
- Capital social: 1.903.000 €

Aspectos Legales

- Obligado a presentar cuentas: SI

B.O.R.M.E. (Boletín Oficial del Registro Mercantil)

Resumen

- Actos sobre actividad: 0
- Actos sobre administradores: 2 (Último: 15/04/2013, primero: 02/04/2013)
- Actos de capital: 1 (Último: 06/05/2013)
- Actos de creación: 1 (Último: 02/04/2013)
- Actos de depósitos: 0
- Actos de identificación: 1 (Último: 06/05/2013)
- Actos informativos: 1 (Último: 02/04/2013)
- Actos sobre procedimientos: 0

Informe Promocional

AL EZ IMPORT EXPORT SOCIEDAD LIMITADA.

Página 4

www.einforma.com Toda la información económica, financiera y empresarial

einforma es una marca de IIFORMA D&B, S.A., empresa líder en información Comercial, Financiera y de Marketing. IIFORMA D&B, S.A. es el proveedor de información de riesgo-creditio de más del 95% de las entidades bancarias de España. La base de datos de IIFORMA D&B, S.A. posee más información financiera de empresas españolas que ninguna otra empresa de información. IIFORMA D&B S.A. - Avda. Industria 32 - 28108 Alcobendas (Madrid) - Tlf: 902 10 11 32 Fax: 91 490 10 98



Últimos Actos BORME

Actos más significativos de los últimos doce meses

ACTO	FECHA	Nº ANUNCIO	REG. MERC.
Cambio de domicilio social	06/05/2013	206216	Tarragona
Ampliación de capital	06/05/2013	206216	Tarragona
Declaración de unipersonalidad	02/04/2013	153398	Tarragona
Constitución	02/04/2013	153398	Tarragona

Otros actos

ACTO	FECHA	Nº ANUNCIO	REG. MERC.
Nombramientos	15/04/2013	176288	Tarragona
Nombramientos	02/04/2013	153398	Tarragona

La información del presente informe procede de la base de datos de INFORMA D&B S.A. Se considera que hay algún dato erróneo puede solicitar su rectificación dirigiéndose al Departamento de Colaboración de INFORMA D&B S.A. Avenida de la Industria, 32 Alcobendas, 28108 MADRID. El presente informe es para uso interno y no puede ser reproducido, publicado o redistribuido, parcial o totalmente, de forma alguna sin la autorización expresa de INFORMA D&B. Debido a la gran cantidad de fuentes de información utilizadas para la elaboración del presente informe, INFORMA D&B S.A. no garantiza la precisión absoluta de la información, ni se hace responsable de su uso para una finalidad en concreto. Asimismo indicamos que el presente informe no puede ser el único elemento a tener en cuenta para la toma de decisiones. La información sobre personas físicas contenida en el presente informe hace referencia únicamente a su actividad empresarial o profesional y debe ser utilizada exclusivamente en el marco de la empresa a la que representan o prestan sus servicios.

Informe Promocional

AL EZ IMPORT EXPORT SOCIEDAD LIMITADA

Página 5

www.einforma.com Toda la información económica, financiera y empresarial

einforma es una marca de INFORMA D&B S.A., empresa líder en Información Comercial, Financiera y de Marketing. INFORMA D&B S.A. es el proveedor de información de riesgo-estético de más del 95% de las entidades financieras de España. La base de datos de INFORMA D&B S.A. posee más información financiera de empresas españolas que ninguna otra empresa de información. INFORMA D&B S.A. - Avda. Industria 32 - 28108 Alcobendas (Madrid) - Tlf: 902 10 11 32 Fax: 91 450 10 98



公司註冊處
Companies Registry

法團成立表格
(股份有限公司)
Incorporation Form
(Company Limited by Shares)

(《公司條例》第 14A 條)
(Companies Ordinance s. 14A)

表格
Form
NC1

填表前請參閱《填表須知》。
Please read the Notes for Completion before completing this form.

(註 Note 8)

1 擬採用的公司名稱 Intended Company Name

擬採用的公司英文名稱 Intended English Company Name

AL EZZ FOR BUSINESS CLEARANCE & TRADING LIMITED

擬採用的公司中文名稱 Intended Chinese Company Name

(註 Note 9)

2 公司類別 Type of Company

請在適用的空格內加上✓號。Please tick the relevant box

私人 Private

非私人 Non-private

(註 Note 10)

3 公司在香港的註冊辦事處擬採用的地址

The Intended Address of the Company's Registered Office in Hong Kong

ROOM 705, HO KING COMMERCIAL CENTRE, 2-16 FA YUEN STREET, MONGKOK, KOWLOON

(「轉交」地址及郵政信箱號碼恕不能受) Care of addresses and post office box numbers are not acceptable)

(註 Note 11)

4 電郵地址 E-mail Address

(註 Note 4)

提交人的資料 Presenter's Reference

姓名 Name:

YUTAI MANAGEMENT CONSULTATION LIMITED

地址 Address:

ROOM 705, HO KING COMMERCIAL CENTRE, 2-16 FA YUEN STREET, MONGKOK, KOWLOON

電話 Tel: 368 95995 傳真 Fax: 2672 0452

電郵地址 E-mail Address:

傳真 Reference:

說明編號 1/2011 (修訂) (2011 年 2 月)
Specification No. 1/2011 (Revision) (Feb. 2011)

